

Anti-SERINC2 Antibody
Rabbit polyclonal antibody to SERINC2
Catalog # AP59908**Specification**

Anti-SERINC2 Antibody - Product Information

Application	WB, IHC
Primary Accession	Q96SA4
Reactivity	Human
Host	Rabbit
Clonality	Polyclonal
Calculated MW	50742

Anti-SERINC2 Antibody - Additional Information**Gene ID** 347735**Other Names**

TDE2L; Serine incorporator 2; Tumor differentially expressed protein 2-like

Target/Specificity

KLH-conjugated synthetic peptide encompassing a sequence within the C-term region of human SERINC2. The exact sequence is proprietary.

Dilution

WB~~WB (1/500 - 1/1000), IH (1/100 - 1/200)

IHC~~1:100~500

Format

Liquid in 0.42% Potassium phosphate, 0.87% Sodium chloride, pH 7.3, 30% glycerol, and 0.09% (W/V) sodium azide.

Storage

Store at -20 °C. Stable for 12 months from date of receipt

Anti-SERINC2 Antibody - Protein Information**Name** SERINC2 ([HGNC:23231](#))**Synonyms** TDE2L**Function**

Non-ATP-dependent, non-specific lipid transporter for phosphatidylserine, phosphatidylcholine, and phosphatidylethanolamine. Functions as a scramblase that flips lipids in both directions across the membrane. In contrast to SERINC3 and SERINC5, has no effect on HIV-1 particles infectivity.

Cellular Location

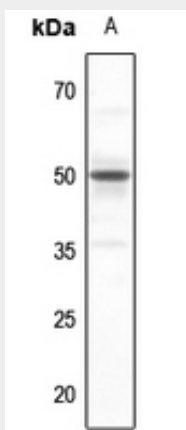
Cell membrane; Multi-pass membrane protein

Anti-SERINC2 Antibody - Protocols

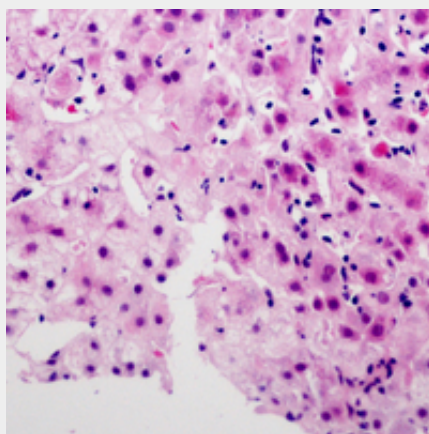
Provided below are standard protocols that you may find useful for product applications.

- [Western Blot](#)
- [Blocking Peptides](#)
- [Dot Blot](#)
- [Immunohistochemistry](#)
- [Immunofluorescence](#)
- [Immunoprecipitation](#)
- [Flow Cytometry](#)
- [Cell Culture](#)

Anti-SERINC2 Antibody - Images



Western blot analysis of SERINC2 expression in HEK293T (A) whole cell lysates.



Immunohistochemical analysis of SERINC2 staining in human liver cancer formalin fixed paraffin embedded tissue section. The section was pre-treated using heat mediated antigen retrieval with sodium citrate buffer (pH 6.0). The section was then incubated with the antibody at room temperature and detected using an HRP conjugated compact polymer system. AEC was used as the chromogen. The section was then counterstained with haematoxylin and mounted with DPX.

Anti-SERINC2 Antibody - Background

KLH-conjugated synthetic peptide encompassing a sequence within the C-term region of human SERINC2. The exact sequence is proprietary.