

**Anti-BMPR2 Antibody**  
**Rabbit polyclonal antibody to BMPR2**  
**Catalog # AP59917****Specification**

---

**Anti-BMPR2 Antibody - Product Information**

Application	WB
Primary Accession	<a href="#">Q13873</a>
Other Accession	<a href="#">Q35607</a>
Reactivity	Human, Mouse, Rat, Pig
Host	Rabbit
Clonality	Polyclonal
Calculated MW	115201

**Anti-BMPR2 Antibody - Additional Information****Gene ID** 659**Other Names**

PPH1; Bone morphogenetic protein receptor type-2; BMP type-2 receptor; BMPR-2; Bone morphogenetic protein receptor type II; BMP type II receptor; BMPR-II

**Target/Specificity**

Recognizes endogenous levels of BMPR2 protein.

**Dilution**

WB~~WB (1/500 - 1/1000)

**Format**

Liquid in 0.42% Potassium phosphate, 0.87% Sodium chloride, pH 7.3, 30% glycerol, and 0.09% (W/V) sodium azide.

**Storage**

Store at -20 °C. Stable for 12 months from date of receipt

**Anti-BMPR2 Antibody - Protein Information****Name** BMPR2**Synonyms** PPH1**Function**

On ligand binding, forms a receptor complex consisting of two type II and two type I transmembrane serine/threonine kinases. Type II receptors phosphorylate and activate type I receptors which autophosphorylate, then bind and activate SMAD transcriptional regulators. Can also mediate signaling through the activation of the p38MAPK cascade (PubMed:<a href="http://www.uniprot.org/citations/12045205" target="\_blank">12045205</a>). Binds to BMP7, BMP2 and, less efficiently, BMP4. Binding is weak but enhanced by the presence of type I

receptors for BMPs. Mediates induction of adipogenesis by GDF6. Promotes signaling also by binding to activin A/INHBA (PubMed:<a href="http://www.uniprot.org/citations/24018044" target="\_blank">24018044</a>).

**Cellular Location**

Cell membrane; Single-pass type I membrane protein

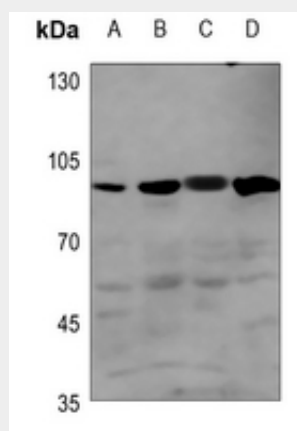
**Tissue Location**

Highly expressed in heart and liver.

**Anti-BMPR2 Antibody - Protocols**

Provided below are standard protocols that you may find useful for product applications.

- [Western Blot](#)
- [Blocking Peptides](#)
- [Dot Blot](#)
- [Immunohistochemistry](#)
- [Immunofluorescence](#)
- [Immunoprecipitation](#)
- [Flow Cytometry](#)
- [Cell Culture](#)

**Anti-BMPR2 Antibody - Images**

Western blot analysis of BMPR2 expression in mouse kidney (A), mouse heart (B), rat kidney (C), rat heart (D) whole cell lysates.

**Anti-BMPR2 Antibody - Background**

KLH-conjugated synthetic peptide encompassing a sequence within the N-term region of human BMPR2. The exact sequence is proprietary.