

Anti-EPO Antibody
Rabbit polyclonal antibody to EPO
Catalog # AP59923**Specification**

Anti-EPO Antibody - Product Information

Application	WB
Primary Accession	P01588
Other Accession	P07321
Reactivity	Human, Mouse, Rat, Monkey
Host	Rabbit
Clonality	Polyclonal
Calculated MW	21307

Anti-EPO Antibody - Additional Information**Gene ID** 2056**Other Names**

Erythropoietin; Epoetin

Target/Specificity

Recognizes endogenous levels of EPO protein.

Dilution

WB~~WB (1/500 - 1/1000)

Format

Liquid in 0.42% Potassium phosphate, 0.87% Sodium chloride, pH 7.3, 30% glycerol, and 0.09% (W/V) sodium azide.

Storage

Store at -20 °C.Stable for 12 months from date of receipt

Anti-EPO Antibody - Protein Information**Name** EPO**Function**

Hormone involved in the regulation of erythrocyte proliferation and differentiation and the maintenance of a physiological level of circulating erythrocyte mass. Binds to EPOR leading to EPOR dimerization and JAK2 activation thereby activating specific downstream effectors, including STAT1 and STAT3.

Cellular Location

Secreted.

Tissue Location

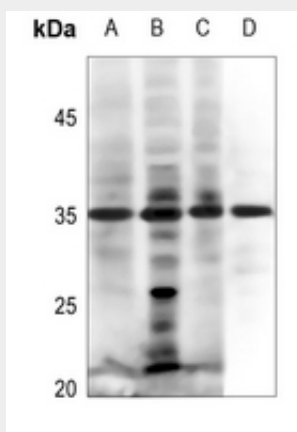
Produced by kidney or liver of adult mammals and by liver of fetal or neonatal mammals

Anti-EPO Antibody - Protocols

Provided below are standard protocols that you may find useful for product applications.

- [Western Blot](#)
- [Blocking Peptides](#)
- [Dot Blot](#)
- [Immunohistochemistry](#)
- [Immunofluorescence](#)
- [Immunoprecipitation](#)
- [Flow Cytometry](#)
- [Cell Culture](#)

Anti-EPO Antibody - Images



Western blot analysis of EPO expression in HEK293T (A), Hela (B), A549 (C), rat liver (D) whole cell lysates.

Anti-EPO Antibody - Background

KLH-conjugated synthetic peptide encompassing a sequence within the center region of human EPO. The exact sequence is proprietary.