

Anti-HMGA1 Antibody
Rabbit polyclonal antibody to HMGA1
Catalog # AP59926**Specification**

Anti-HMGA1 Antibody - Product Information

Application	WB
Primary Accession	P17096
Other Accession	P17095
Reactivity	Human, Mouse, Rat, Pig, Bovine, Dog
Host	Rabbit
Clonality	Polyclonal
Calculated MW	11676

Anti-HMGA1 Antibody - Additional Information**Gene ID** 3159**Other Names**

HMGIY; High mobility group protein HMG-I/HMG-Y; HMG-I(Y); High mobility group AT-hook protein 1; High mobility group protein A1; High mobility group protein R

Target/Specificity

KLH-conjugated synthetic peptide encompassing a sequence within the C-term region of human HMGA1. The exact sequence is proprietary.

Dilution

WB~~WB (1/500 - 1/1000)

Format

Liquid in 0.42% Potassium phosphate, 0.87% Sodium chloride, pH 7.3, 30% glycerol, and 0.09% (W/V) sodium azide.

Storage

Store at -20 °C. Stable for 12 months from date of receipt

Anti-HMGA1 Antibody - Protein Information**Name** HMGA1**Synonyms** HMGIY**Function**

HMG-I/Y bind preferentially to the minor groove of A+T rich regions in double-stranded DNA. It is suggested that these proteins could function in nucleosome phasing and in the 3'-end processing of mRNA transcripts. They are also involved in the transcription regulation of genes containing, or in close proximity to A+T-rich regions.

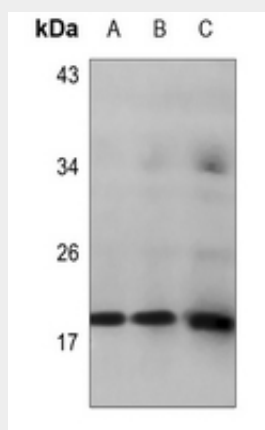
Cellular Location

Nucleus. Chromosome.

Anti-HMGA1 Antibody - Protocols

Provided below are standard protocols that you may find useful for product applications.

- [Western Blot](#)
- [Blocking Peptides](#)
- [Dot Blot](#)
- [Immunohistochemistry](#)
- [Immunofluorescence](#)
- [Immunoprecipitation](#)
- [Flow Cytometry](#)
- [Cell Culture](#)

Anti-HMGA1 Antibody - Images

Western blot analysis of HMGA1 expression in A375 (A), U2OS (B), MCF7 (C) whole cell lysates.

Anti-HMGA1 Antibody - Background

KLH-conjugated synthetic peptide encompassing a sequence within the C-term region of human HMGA1. The exact sequence is proprietary.