

Anti-ORC2 Antibody
Rabbit polyclonal antibody to ORC2
Catalog # AP59930**Specification**

Anti-ORC2 Antibody - Product Information

Application	WB
Primary Accession	Q13416
Other Accession	Q60862
Reactivity	Human, Mouse, Rat, Monkey
Host	Rabbit
Clonality	Polyclonal
Calculated MW	65972

Anti-ORC2 Antibody - Additional Information**Gene ID** 4999**Other Names**

ORC2L; Origin recognition complex subunit 2

Target/Specificity

KLH-conjugated synthetic peptide encompassing a sequence within the center region of human ORC2. The exact sequence is proprietary.

Dilution

WB~~WB (1/500 - 1/1000)

Format

Liquid in 0.42% Potassium phosphate, 0.87% Sodium chloride, pH 7.3, 30% glycerol, and 0.09% (W/V) sodium azide.

Storage

Store at -20 °C. Stable for 12 months from date of receipt

Anti-ORC2 Antibody - Protein Information**Name** ORC2**Synonyms** ORC2L**Function**

Component of the origin recognition complex (ORC) that binds origins of replication. DNA-binding is ATP-dependent. The specific DNA sequences that define origins of replication have not been identified yet. ORC is required to assemble the pre-replication complex necessary to initiate DNA replication. Binds histone H3 and H4 trimethylation marks H3K9me3, H3K20me3 and H4K27me3. Stabilizes LRWD1, by protecting it from ubiquitin-mediated proteasomal degradation. Also stabilizes ORC3.

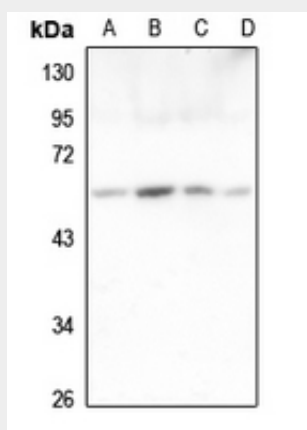
Cellular Location

Nucleus.

Anti-ORC2 Antibody - Protocols

Provided below are standard protocols that you may find useful for product applications.

- [Western Blot](#)
- [Blocking Peptides](#)
- [Dot Blot](#)
- [Immunohistochemistry](#)
- [Immunofluorescence](#)
- [Immunoprecipitation](#)
- [Flow Cytometry](#)
- [Cell Culture](#)

Anti-ORC2 Antibody - Images

Western blot analysis of ORC2 expression in HeLa (A), HGC27 (B), U2OS (C), A549 (D) whole cell lysates.

Anti-ORC2 Antibody - Background

KLH-conjugated synthetic peptide encompassing a sequence within the center region of human ORC2. The exact sequence is proprietary.