

Anti-SPARC Antibody
Rabbit polyclonal antibody to SPARC
Catalog # AP59939**Specification**

Anti-SPARC Antibody - Product Information

Application	WB, IHC
Primary Accession	P09486
Other Accession	P07214
Reactivity	Human, Mouse, Rat, Zebrafish, Bovine, SARS
Host	Rabbit
Clonality	Polyclonal
Calculated MW	34632

Anti-SPARC Antibody - Additional Information**Gene ID** 6678**Other Names**

ON; SPARC; Basement-membrane protein 40; BM-40; Osteonectin; ON; Secreted protein acidic and rich in cysteine

Target/Specificity

KLH-conjugated synthetic peptide encompassing a sequence within the center region of human SPARC. The exact sequence is proprietary.

Dilution

WB~~WB (1/500 - 1/1000), IH (1/100 - 1/200)

IHC~~1:100~500

Format

Liquid in 0.42% Potassium phosphate, 0.87% Sodium chloride, pH 7.3, 30% glycerol, and 0.09% (W/V) sodium azide.

Storage

Store at -20 °C. Stable for 12 months from date of receipt

Anti-SPARC Antibody - Protein Information**Name** SPARC**Synonyms** ON**Function**

Appears to regulate cell growth through interactions with the extracellular matrix and cytokines. Binds calcium and copper, several types of collagen, albumin, thrombospondin, PDGF and cell membranes. There are two calcium binding sites; an acidic domain that binds 5 to 8 Ca(2+) with a

low affinity and an EF-hand loop that binds a Ca^{2+} ion with a high affinity.

Cellular Location

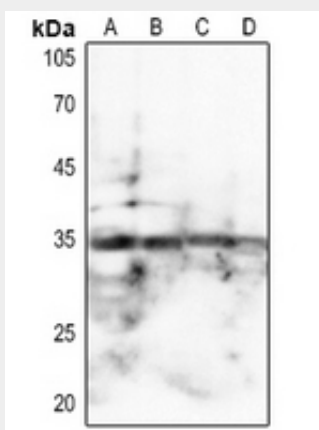
Secreted, extracellular space, extracellular matrix, basement membrane. Note=In or around the basement membrane

Anti-SPARC Antibody - Protocols

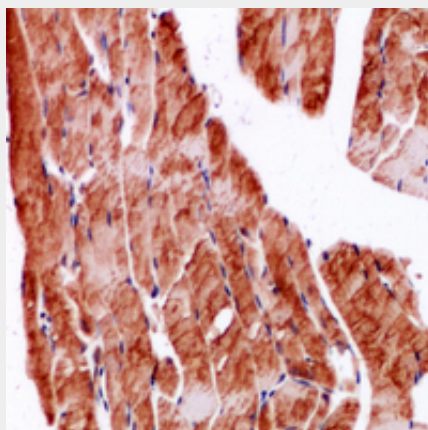
Provided below are standard protocols that you may find useful for product applications.

- [Western Blot](#)
- [Blocking Peptides](#)
- [Dot Blot](#)
- [Immunohistochemistry](#)
- [Immunofluorescence](#)
- [Immunoprecipitation](#)
- [Flow Cytometry](#)
- [Cell Culture](#)

Anti-SPARC Antibody - Images



Western blot analysis of SPARC expression in A549 (A), mouse kidney (B), mouse brain (C), rat brain (D) whole cell lysates.



Immunohistochemical analysis of SPARC staining in mouse muscle formalin fixed paraffin embedded tissue section. The section was pre-treated using heat mediated antigen retrieval with

sodium citrate buffer (pH 6.0). The section was then incubated with the antibody at room temperature and detected using an HRP conjugated compact polymer system. DAB was used as the chromogen. The section was then counterstained with haematoxylin and mounted with DPX.

Anti-SPARC Antibody - Background

KLH-conjugated synthetic peptide encompassing a sequence within the center region of human SPARC. The exact sequence is proprietary.