

**Anti-DR5 Antibody**  
**Rabbit polyclonal antibody to DR5**  
**Catalog # AP59943****Specification**

---

**Anti-DR5 Antibody - Product Information**

Application	WB
Primary Accession	<a href="#">O14763</a>
Reactivity	Human, Rat
Host	Rabbit
Clonality	Polyclonal
Calculated MW	47878

**Anti-DR5 Antibody - Additional Information****Gene ID** 8795**Other Names**

DR5; KILLER; TRAILR2; TRICK2; ZTNFR9; Tumor necrosis factor receptor superfamily member 10B; Death receptor 5; TNF-related apoptosis-inducing ligand receptor 2; TRAIL receptor 2; TRAIL-R2; CD262

**Target/Specificity**

Recognizes endogenous levels of DR5 protein.

**Dilution**

WB~~WB (1/500 - 1/1000)

**Format**

Liquid in 0.42% Potassium phosphate, 0.87% Sodium chloride, pH 7.3, 30% glycerol, and 0.09% (W/V) sodium azide.

**Storage**

Store at -20 °C. Stable for 12 months from date of receipt

**Anti-DR5 Antibody - Protein Information****Name** TNFRSF10B**Synonyms** DR5, KILLER, TRAILR2, TRICK2, ZTNFR9**Function**

Receptor for the cytotoxic ligand TNFSF10/TRAIL (PubMed:<a href="http://www.uniprot.org/citations/10549288" target="\_blank">10549288</a>). The adapter molecule FADD recruits caspase-8 to the activated receptor. The resulting death-inducing signaling complex (DISC) performs caspase-8 proteolytic activation which initiates the subsequent cascade of caspases (aspartate-specific cysteine proteases) mediating apoptosis. Promotes the activation of NF-kappa-B. Essential for ER stress-induced apoptosis.

**Cellular Location**

Membrane; Single-pass type I membrane protein.

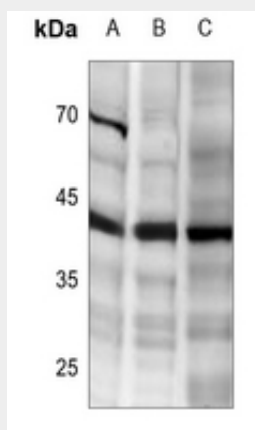
**Tissue Location**

Widely expressed in adult and fetal tissues; very highly expressed in tumor cell lines such as HeLaS3, K-562, HL-60, SW480, A-549 and G-361; highly expressed in heart, peripheral blood lymphocytes, liver, pancreas, spleen, thymus, prostate, ovary, uterus, placenta, testis, esophagus, stomach and throughout the intestinal tract; not detectable in brain

**Anti-DR5 Antibody - Protocols**

Provided below are standard protocols that you may find useful for product applications.

- [Western Blot](#)
- [Blocking Peptides](#)
- [Dot Blot](#)
- [Immunohistochemistry](#)
- [Immunofluorescence](#)
- [Immunoprecipitation](#)
- [Flow Cytometry](#)
- [Cell Culture](#)

**Anti-DR5 Antibody - Images**

Western blot analysis of DR5 expression in HepG2 (A), MCF7 (B), HEK293T (C) whole cell lysates.

**Anti-DR5 Antibody - Background**

KLH-conjugated synthetic peptide encompassing a sequence within the center region of human DR5. The exact sequence is proprietary.