

**Anti-Cyclin B3 Antibody**  
**Rabbit polyclonal antibody to Cyclin B3**  
**Catalog # AP59955****Specification**

---

**Anti-Cyclin B3 Antibody - Product Information**

Application	WB
Primary Accession	<a href="#">Q8WWL7</a>
Other Accession	<a href="#">Q810T2</a>
Reactivity	Human, Mouse, Rat
Host	Rabbit
Clonality	Polyclonal
Calculated MW	157916

**Anti-Cyclin B3 Antibody - Additional Information****Gene ID** 85417**Other Names**

CYCB3; G2/mitotic-specific cyclin-B3

**Target/Specificity**

Recognizes endogenous levels of Cyclin B3 protein.

**Dilution**

WB~~WB (1/500 - 1/1000)

**Format**

Liquid in 0.42% Potassium phosphate, 0.87% Sodium chloride, pH 7.3, 30% glycerol, and 0.09% (W/V) sodium azide.

**Storage**

Store at -20 °C. Stable for 12 months from date of receipt

**Anti-Cyclin B3 Antibody - Protein Information****Name** CCNB3**Synonyms** CYCB3**Function**

Cyclins are positive regulatory subunits of the cyclin- dependent kinases (CDKs), and thereby play an essential role in the control of the cell cycle, notably via their destruction during cell division. Its tissue specificity suggest that it may be required during early meiotic prophase I.

**Cellular Location**

Nucleus.

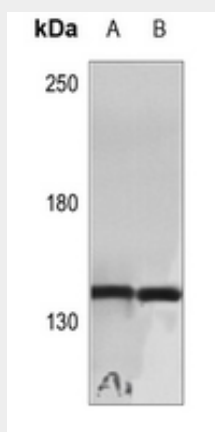
**Tissue Location**

Testis specific. In testis, it is expressed in developing germ cells, but not in Leydig cells. Weakly or not expressed in other tissues.

**Anti-Cyclin B3 Antibody - Protocols**

Provided below are standard protocols that you may find useful for product applications.

- [Western Blot](#)
- [Blocking Peptides](#)
- [Dot Blot](#)
- [Immunohistochemistry](#)
- [Immunofluorescence](#)
- [Immunoprecipitation](#)
- [Flow Cytometry](#)
- [Cell Culture](#)

**Anti-Cyclin B3 Antibody - Images**

Western blot analysis of Cyclin B3 expression in rat brain (A), mouse liver (B) whole cell lysates.

**Anti-Cyclin B3 Antibody - Background**

KLH-conjugated synthetic peptide encompassing a sequence within the center region of human Cyclin B3. The exact sequence is proprietary.