

Anti-ALDOB Antibody
Rabbit polyclonal antibody to ALDOB
Catalog # AP59963**Specification**

Anti-ALDOB Antibody - Product Information

Application	WB, IHC
Primary Accession	P05062
Other Accession	Q91Y97
Reactivity	Human, Mouse, Rat, Rabbit, Monkey, Pig
Host	Rabbit
Clonality	Polyclonal
Calculated MW	39473

Anti-ALDOB Antibody - Additional Information**Gene ID** 229**Other Names**

ALDB; Fructose-bisphosphate aldolase B; Liver-type aldolase

Target/Specificity

KLH-conjugated synthetic peptide encompassing a sequence within the center region of human ALDOB. The exact sequence is proprietary.

Dilution

WB~~WB (1/500 - 1/1000), IH (1/100 - 1/200)

IHC~~1:100~500

Format

Liquid in 0.42% Potassium phosphate, 0.87% Sodium chloride, pH 7.3, 30% glycerol, and 0.09% (W/V) sodium azide.

Storage

Store at -20 °C. Stable for 12 months from date of receipt

Anti-ALDOB Antibody - Protein Information**Name** ALDOB {ECO:0000303|PubMed:15880727, ECO:0000312|HGNC:HGNC:417}**Function**

Catalyzes the aldol cleavage of fructose 1,6-bisphosphate to form two triosephosphates dihydroxyacetone phosphate and D- glyceraldehyde 3-phosphate in glycolysis as well as the reverse stereospecific aldol addition reaction in gluconeogenesis. In fructolysis, metabolizes fructose 1-phosphate derived from the phosphorylation of dietary fructose by fructokinase into dihydroxyacetone phosphate and D-glyceraldehyde (PubMed:10970798, PubMed:12205126, PubMed:12205126).

<http://www.uniprot.org/citations/20848650> target="_blank">20848650). Acts as an adapter independently of its enzymatic activity, exerts a tumor suppressor role by stabilizing the ternary complex with G6PD and TP53 to inhibit G6PD activity and keep oxidative pentose phosphate metabolism in check (PubMed:35122041).

Cellular Location

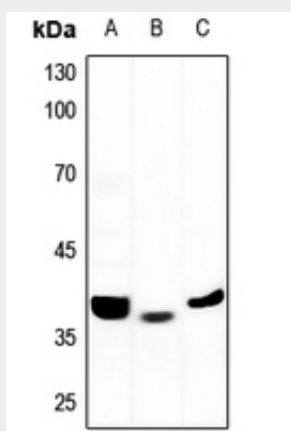
Cytoplasm, cytosol. Cytoplasm, cytoskeleton, microtubule organizing center, centrosome, centriolar satellite

Anti-ALDOB Antibody - Protocols

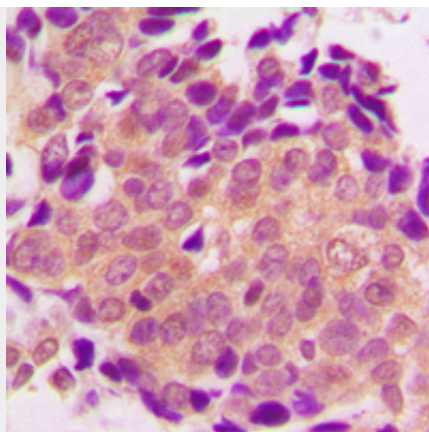
Provided below are standard protocols that you may find useful for product applications.

- [Western Blot](#)
- [Blocking Peptides](#)
- [Dot Blot](#)
- [Immunohistochemistry](#)
- [Immunofluorescence](#)
- [Immunoprecipitation](#)
- [Flow Cytometry](#)
- [Cell Culture](#)

Anti-ALDOB Antibody - Images



Western blot analysis of ALDOB expression in mouse liver (A), mouse kidney (B), rat liver (C) whole cell lysates.



Immunohistochemical analysis of ALDOB staining in human breast cancer formalin fixed paraffin embedded tissue section. The section was pre-treated using heat mediated antigen retrieval with sodium citrate buffer (pH 6.0). The section was then incubated with the antibody at room temperature and detected using an HRP conjugated compact polymer system. DAB was used as the chromogen. The section was then counterstained with haematoxylin and mounted with DPX.

Anti-ALDOB Antibody - Background

KLH-conjugated synthetic peptide encompassing a sequence within the center region of human ALDOB. The exact sequence is proprietary.