

Anti-ARF4 Antibody
Rabbit polyclonal antibody to ARF4
Catalog # AP59969**Specification**

Anti-ARF4 Antibody - Product Information

Application	WB, IP, IHC
Primary Accession	P18085
Other Accession	P61750
Reactivity	Human, Mouse, Rat, Monkey
Host	Rabbit
Clonality	Polyclonal
Calculated MW	20511

Anti-ARF4 Antibody - Additional Information**Gene ID** 378**Other Names**

ARF2; ADP-ribosylation factor 4

Target/Specificity

Recognizes endogenous levels of ARF4 protein.

Dilution

WB~~WB (1/500 - 1/1000), IH (1/100 - 1/200), IP (1/10 - 1/100)

IP~~N/A

IHC~~1:100~500

Format

Liquid in 0.42% Potassium phosphate, 0.87% Sodium chloride, pH 7.3, 30% glycerol, and 0.09% (W/V) sodium azide.

Storage

Store at -20 °C. Stable for 12 months from date of receipt

Anti-ARF4 Antibody - Protein Information**Name** ARF4**Synonyms** ARF2**Function**

GTP-binding protein that functions as an allosteric activator of the cholera toxin catalytic subunit, an ADP-ribosyltransferase. Involved in protein trafficking; may modulate vesicle budding and uncoating within the Golgi apparatus. Part of the ciliary targeting complex containing Rab11, ASAP1, Rabin8/RAB3IP, RAB11FIP3 and ARF4, which direct preciliary vesicle trafficking to mother centriole and ciliogenesis initiation (PubMed:<a href="http://www.uniprot.org/citations/25673879"

target="_blank">25673879).

Cellular Location

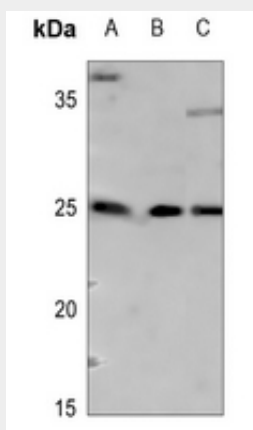
Golgi apparatus. Membrane; Lipid-anchor

Anti-ARF4 Antibody - Protocols

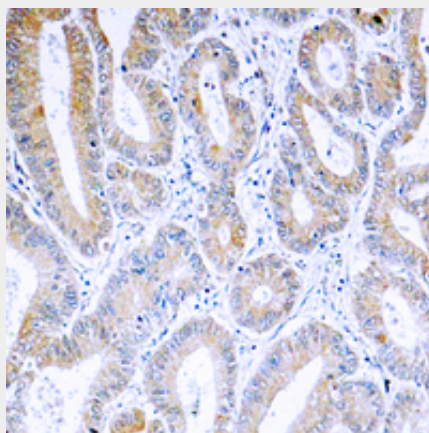
Provided below are standard protocols that you may find useful for product applications.

- [Western Blot](#)
- [Blocking Peptides](#)
- [Dot Blot](#)
- [Immunohistochemistry](#)
- [Immunofluorescence](#)
- [Immunoprecipitation](#)
- [Flow Cytometry](#)
- [Cell Culture](#)

Anti-ARF4 Antibody - Images



Western blot analysis of ARF4 expression in HEK293T (A), SHSY5Y (B), mouse liver (C) whole cell lysates.



Immunohistochemical analysis of ARF4 staining in human colon cancer formalin fixed paraffin embedded tissue section. The section was pre-treated using heat mediated antigen retrieval with sodium citrate buffer (pH 6.0). The section was then incubated with the antibody at room

temperature and detected using an HRP conjugated compact polymer system. DAB was used as the chromogen. The section was then counterstained with haematoxylin and mounted with DPX.

Anti-ARF4 Antibody - Background

KLH-conjugated synthetic peptide encompassing a sequence within the center region of human ARF4. The exact sequence is proprietary.