

**TRAM2 Antibody (C-term)**  
**Affinity Purified Rabbit Polyclonal Antibody (Pab)**  
**Catalog # AP5996b****Specification**

---

**TRAM2 Antibody (C-term) - Product Information**

Application	WB, IHC-P,E
Primary Accession	<a href="#">Q15035</a>
Other Accession	<a href="#">NP_036420.1</a>
Reactivity	Human
Host	Rabbit
Clonality	Polyclonal
Isotype	Rabbit IgG
Calculated MW	43328
Antigen Region	342-370

**TRAM2 Antibody (C-term) - Additional Information****Gene ID** 9697**Other Names**

Translocating chain-associated membrane protein 2, TRAM2, KIAA0057

**Target/Specificity**

This TRAM2 antibody is generated from rabbits immunized with a KLH conjugated synthetic peptide between 342-370 amino acids from the C-terminal region of human TRAM2.

**Dilution**

WB~~1:1000

IHC-P~~1:50~100

E~~Use at an assay dependent concentration.

**Format**

Purified polyclonal antibody supplied in PBS with 0.09% (W/V) sodium azide. This antibody is purified through a protein A column, followed by peptide affinity purification.

**Storage**

Maintain refrigerated at 2-8°C for up to 2 weeks. For long term storage store at -20°C in small aliquots to prevent freeze-thaw cycles.

**Precautions**

TRAM2 Antibody (C-term) is for research use only and not for use in diagnostic or therapeutic procedures.

**TRAM2 Antibody (C-term) - Protein Information****Name** TRAM2

**Synonyms** KIAA0057

**Function** Necessary for collagen type I synthesis. May couple the activity of the ER Ca(2+) pump SERCA2B with the activity of the translocon. This coupling may increase the local Ca(2+) concentration at the site of collagen synthesis, and a high Ca(2+) concentration may be necessary for the function of molecular chaperones involved in collagen folding. Required for proper insertion of the first transmembrane helix N-terminus of TM4SF20 into the ER lumen, may act as a ceramide sensor for regulated alternative translocation (RAT) (PubMed:[27499293](#)).

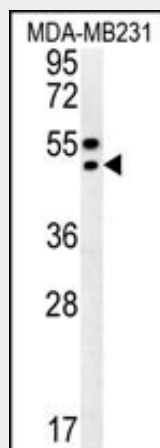
**Cellular Location**

Membrane; Multi-pass membrane protein

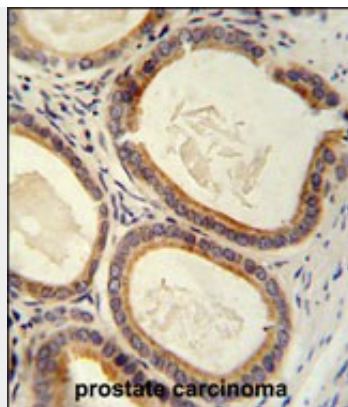
**TRAM2 Antibody (C-term) - Protocols**

Provided below are standard protocols that you may find useful for product applications.

- [Western Blot](#)
- [Blocking Peptides](#)
- [Dot Blot](#)
- [Immunohistochemistry](#)
- [Immunofluorescence](#)
- [Immunoprecipitation](#)
- [Flow Cytometry](#)
- [Cell Culture](#)

**TRAM2 Antibody (C-term) - Images**

TRAM2 Antibody (C-term) (Cat. #AP5996b) western blot analysis in MDA-MB231 cell line lysates (35ug/lane). This demonstrates the TRAM2 antibody detected the TRAM2 protein (arrow).



TRAM2 antibody (C-term) (Cat. #AP5996b) immunohistochemistry analysis in formalin fixed and paraffin embedded human prostate carcinoma followed by peroxidase conjugation of the secondary antibody and DAB staining. This data demonstrates the use of the TRAM2 antibody (C-term) for immunohistochemistry. Clinical relevance has not been evaluated.