

Anti-MASH1 Antibody
Rabbit polyclonal antibody to MASH1
Catalog # AP59970**Specification**

Anti-MASH1 Antibody - Product Information

Application	WB
Primary Accession	P50553
Other Accession	Q02067
Reactivity	Human, Mouse, Rat, Zebrafish, Chicken
Host	Rabbit
Clonality	Polyclonal
Calculated MW	25454

Anti-MASH1 Antibody - Additional Information**Gene ID** 429**Other Names**

ASH1; BHLHA46; HASH1; Achaete-scute homolog 1; ASH-1; hASH1; Class A basic helix-loop-helix protein 46; bHLHa46

Target/Specificity

Recognizes endogenous levels of MASH1 protein.

Dilution

WB~~WB (1/500 - 1/1000)

Format

Liquid in 0.42% Potassium phosphate, 0.87% Sodium chloride, pH 7.3, 30% glycerol, and 0.09% (W/V) sodium azide.

Storage

Store at -20 °C. Stable for 12 months from date of receipt

Anti-MASH1 Antibody - Protein Information**Name** ASCL1 ([HGNC:738](#))**Function**

Transcription factor that plays a key role in neuronal differentiation: acts as a pioneer transcription factor, accessing closed chromatin to allow other factors to bind and activate neural pathways. Directly binds the E box motif (5'-CANNTG-3') on promoters and promotes transcription of neuronal genes. The combination of three transcription factors, ASCL1, POU3F2/BRN2 and MYT1L, is sufficient to reprogram fibroblasts and other somatic cells into induced neuronal (iN) cells in vitro. Plays a role at early stages of development of specific neural lineages in most regions of the CNS, and of several lineages in the PNS. Essential for the generation of olfactory and autonomic neurons. Acts synergistically with FOXN4 to specify the identity of V2b neurons rather than V2a

from bipotential p2 progenitors during spinal cord neurogenesis, probably through DLL4-NOTCH signaling activation. Involved in the regulation of neuroendocrine cell development in the glandular stomach (By similarity).

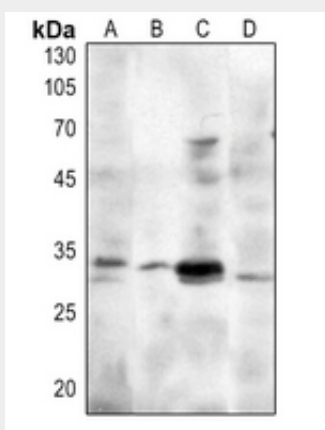
Cellular Location

Nucleus {ECO:0000250|UniProtKB:Q02067}.

Anti-MASH1 Antibody - Protocols

Provided below are standard protocols that you may find useful for product applications.

- [Western Blot](#)
- [Blocking Peptides](#)
- [Dot Blot](#)
- [Immunohistochemistry](#)
- [Immunofluorescence](#)
- [Immunoprecipitation](#)
- [Flow Cytometry](#)
- [Cell Culture](#)

Anti-MASH1 Antibody - Images

Western blot analysis of MASH1 expression in HEK293T (A), mouse lung (B), NIH3T3 (C), H9C2 (D) whole cell lysates.

Anti-MASH1 Antibody - Background

KLH-conjugated synthetic peptide encompassing a sequence within the center region of human MASH1. The exact sequence is proprietary.