

**Anti-BAD (pS136) Antibody**  
**Rabbit polyclonal antibody to BAD (pS136)**  
**Catalog # AP59973****Specification**

---

**Anti-BAD (pS136) Antibody - Product Information**

Application	WB, IHC
Primary Accession	<a href="#">O92934</a>
Other Accession	<a href="#">O61337</a>
Reactivity	Human, Mouse, Rat, Bovine
Host	Rabbit
Clonality	Polyclonal
Calculated MW	18392

**Anti-BAD (pS136) Antibody - Additional Information****Gene ID** 572**Other Names**

BBC6; BCL2L8; Bcl2 antagonist of cell death; BAD; Bcl-2-binding component 6; Bcl-2-like protein 8; Bcl2-L-8; Bcl-XL/Bcl-2-associated death promoter

**Target/Specificity**

Recognizes endogenous levels of BAD (pS136) protein.

**Dilution**

WB~~WB (1/500 - 1/1000), IH (1/100 - 1/200)

IHC~~1:100~500

**Format**

Liquid in 0.42% Potassium phosphate, 0.87% Sodium chloride, pH 7.3, 30% glycerol, and 0.09% (W/V) sodium azide.

**Storage**

Store at -20 °C. Stable for 12 months from date of receipt

**Anti-BAD (pS136) Antibody - Protein Information****Name** BAD**Synonyms** BBC6, BCL2L8**Function**

Promotes cell death. Successfully competes for the binding to Bcl-X(L), Bcl-2 and Bcl-W, thereby affecting the level of heterodimerization of these proteins with BAX. Can reverse the death repressor activity of Bcl-X(L), but not that of Bcl-2 (By similarity). Appears to act as a link between growth factor receptor signaling and the apoptotic pathways.

**Cellular Location**

Mitochondrion outer membrane. Cytoplasm {ECO:0000250|UniProtKB:Q61337}. Note=Colocalizes with HIF3A in the cytoplasm (By similarity). Upon phosphorylation, locates to the cytoplasm. {ECO:0000250|UniProtKB:Q61337}

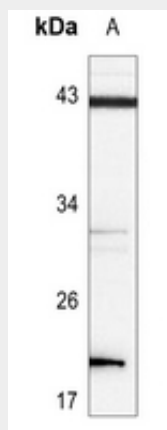
**Tissue Location**

Expressed in a wide variety of tissues.

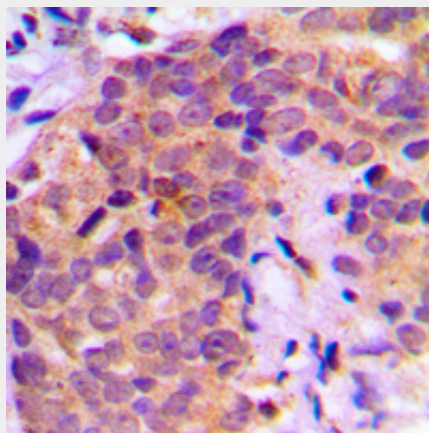
**Anti-BAD (pS136) Antibody - Protocols**

Provided below are standard protocols that you may find useful for product applications.

- [Western Blot](#)
- [Blocking Peptides](#)
- [Dot Blot](#)
- [Immunohistochemistry](#)
- [Immunofluorescence](#)
- [Immunoprecipitation](#)
- [Flow Cytometry](#)
- [Cell Culture](#)

**Anti-BAD (pS136) Antibody - Images**

Western blot analysis of BAD (pS136) expression in THP1 (A) whole cell lysates.



Immunohistochemical analysis of BAD (pS136) staining in human prostate cancer formalin fixed

paraffin embedded tissue section. The section was pre-treated using heat mediated antigen retrieval with sodium citrate buffer (pH 6.0). The section was then incubated with the antibody at room temperature and detected using an HRP conjugated compact polymer system. DAB was used as the chromogen. The section was then counterstained with haematoxylin and mounted with DPX.

**Anti-BAD (pS136) Antibody - Background**

KLH-conjugated synthetic peptide encompassing a sequence within the center region of human BAD (pS136). The exact sequence is proprietary.