

Anti-BARD1 Antibody
Rabbit polyclonal antibody to BARD1
Catalog # AP59974**Specification**

Anti-BARD1 Antibody - Product Information

Application	WB, IH
Primary Accession	Q99728
Reactivity	Human
Host	Rabbit
Clonality	Polyclonal
Calculated MW	86648

Anti-BARD1 Antibody - Additional Information**Gene ID** 580**Other Names**

BRCA1-associated RING domain protein 1; BARD-1

Target/Specificity

Recognizes endogenous levels of BARD1 protein.

Dilution

WB~~WB (1/500 - 1/1000), IH (1/100 - 1/200)

IH~~WB (1/500 - 1/1000), IH (1/100 - 1/200)

Format

Liquid in 0.42% Potassium phosphate, 0.87% Sodium chloride, pH 7.3, 30% glycerol, and 0.09% (W/V) sodium azide.

Storage

Store at -20 °C. Stable for 12 months from date of receipt

Anti-BARD1 Antibody - Protein Information**Name** BARD1**Function**

E3 ubiquitin-protein ligase. The BRCA1-BARD1 heterodimer specifically mediates the formation of 'Lys-6'-linked polyubiquitin chains and coordinates a diverse range of cellular pathways such as DNA damage repair, ubiquitination and transcriptional regulation to maintain genomic stability. Plays a central role in the control of the cell cycle in response to DNA damage. Acts by mediating ubiquitin E3 ligase activity that is required for its tumor suppressor function. Also forms a heterodimer with CSTF1/CSTF-50 to modulate mRNA processing and RNAP II stability by inhibiting pre-mRNA 3' cleavage.

Cellular Location

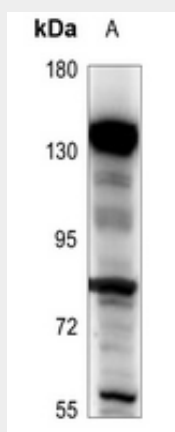
Nucleus. Note=During S phase of the cell cycle, colocalizes with BRCA1 into discrete subnuclear foci. Can translocate to the cytoplasm. Localizes at sites of DNA damage at double-strand breaks (DSBs); recruitment to DNA damage sites is mediated by the BRCA1-A complex

Anti-BARD1 Antibody - Protocols

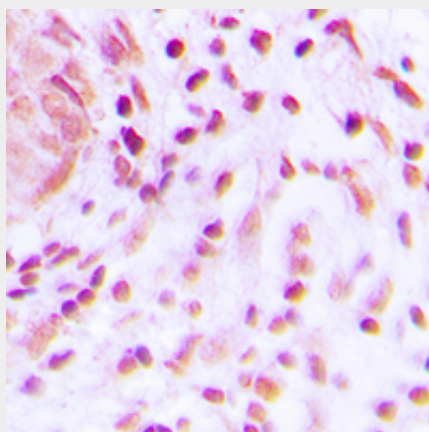
Provided below are standard protocols that you may find useful for product applications.

- [Western Blot](#)
- [Blocking Peptides](#)
- [Dot Blot](#)
- [Immunohistochemistry](#)
- [Immunofluorescence](#)
- [Immunoprecipitation](#)
- [Flow Cytometry](#)
- [Cell Culture](#)

Anti-BARD1 Antibody - Images



Western blot analysis of BARD1 expression in Myla2059 (A) whole cell lysates.



Immunohistochemical analysis of BARD1 staining in human lung cancer formalin fixed paraffin embedded tissue section. The section was pre-treated using heat mediated antigen retrieval with sodium citrate buffer (pH 6.0). The section was then incubated with the antibody at room temperature and detected using an HRP conjugated compact polymer system. DAB was used as the chromogen. The section was then counterstained with haematoxylin and mounted with DPX.

Anti-BARD1 Antibody - Background

KLH-conjugated synthetic peptide encompassing a sequence within the N-term region of human BARD1. The exact sequence is proprietary.