

Anti-M Cadherin Antibody
Rabbit polyclonal antibody to M Cadherin
Catalog # AP59984**Specification**

Anti-M Cadherin Antibody - Product Information

Application	WB
Primary Accession	P55291
Other Accession	P33146
Reactivity	Human, Mouse, Rat
Host	Rabbit
Clonality	Polyclonal
Calculated MW	88916

Anti-M Cadherin Antibody - Additional Information**Gene ID** 1013**Other Names**

CDH14; CDH3; Cadherin-15; Cadherin-14; Muscle cadherin; M-cadherin

Target/Specificity

KLH-conjugated synthetic peptide encompassing a sequence within the N-term region of human M Cadherin. The exact sequence is proprietary.

Dilution

WB~~WB (1/500 - 1/1000)

Format

Liquid in 0.42% Potassium phosphate, 0.87% Sodium chloride, pH 7.3, 30% glycerol, and 0.09% (W/V) sodium azide.

Storage

Store at -20 °C. Stable for 12 months from date of receipt

Anti-M Cadherin Antibody - Protein Information**Name** CDH15**Synonyms** CDH14, CDH3**Function**

Cadherins are calcium-dependent cell adhesion proteins. They preferentially interact with themselves in a homophilic manner in connecting cells; cadherins may thus contribute to the sorting of heterogeneous cell types. M-cadherin is part of the myogenic program and may provide a trigger for terminal muscle differentiation.

Cellular Location

Cell membrane; Single-pass type I membrane protein

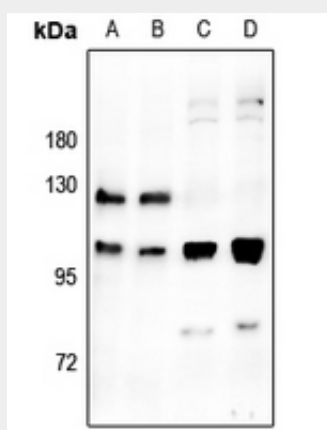
Tissue Location

Expressed in the brain and cerebellum.

Anti-M Cadherin Antibody - Protocols

Provided below are standard protocols that you may find useful for product applications.

- [Western Blot](#)
- [Blocking Peptides](#)
- [Dot Blot](#)
- [Immunohistochemistry](#)
- [Immunofluorescence](#)
- [Immunoprecipitation](#)
- [Flow Cytometry](#)
- [Cell Culture](#)

Anti-M Cadherin Antibody - Images

Western blot analysis of M Cadherin expression in mouse brain (A), rat brain (B), U87MG (C), MG63 (D) whole cell lysates.

Anti-M Cadherin Antibody - Background

KLH-conjugated synthetic peptide encompassing a sequence within the N-term region of human M Cadherin. The exact sequence is proprietary.