

Anti-CDK8 Antibody
Rabbit polyclonal antibody to CDK8
Catalog # AP59986**Specification**

Anti-CDK8 Antibody - Product Information

Application	WB, IHC
Primary Accession	P49336
Other Accession	Q8R3L8
Reactivity	Human, Mouse, Rat, Zebrafish
Host	Rabbit
Clonality	Polyclonal
Calculated MW	53284

Anti-CDK8 Antibody - Additional Information**Gene ID** 1024**Other Names**

Cyclin-dependent kinase 8; Cell division protein kinase 8; Mediator complex subunit CDK8;
Mediator of RNA polymerase II transcription subunit CDK8; Protein kinase K35

Target/Specificity

KLH-conjugated synthetic peptide encompassing a sequence within the N-term region of human CDK8. The exact sequence is proprietary.

Dilution

WB~~WB (1/500 - 1/1000), IH (1/100 - 1/200)
IHC~~1:100~500

Format

Liquid in 0.42% Potassium phosphate, 0.87% Sodium chloride, pH 7.3, 30% glycerol, and 0.09% (W/V) sodium azide.

Storage

Store at -20 °C. Stable for 12 months from date of receipt

Anti-CDK8 Antibody - Protein Information**Name** CDK8**Function**

Component of the Mediator complex, a coactivator involved in regulated gene transcription of nearly all RNA polymerase II-dependent genes. Mediator functions as a bridge to convey information from gene-specific regulatory proteins to the basal RNA polymerase II transcription machinery. Mediator is recruited to promoters by direct interactions with regulatory proteins and serves as a scaffold for the assembly of a functional pre-initiation complex with RNA polymerase II and the general transcription factors. Phosphorylates the CTD (C-terminal domain) of the large

subunit of RNA polymerase II (RNAP II), which may inhibit the formation of a transcription initiation complex. Phosphorylates CCNH leading to down-regulation of the TFIIH complex and transcriptional repression. Recruited through interaction with MAML1 to hyperphosphorylate the intracellular domain of NOTCH, leading to its degradation.

Cellular Location

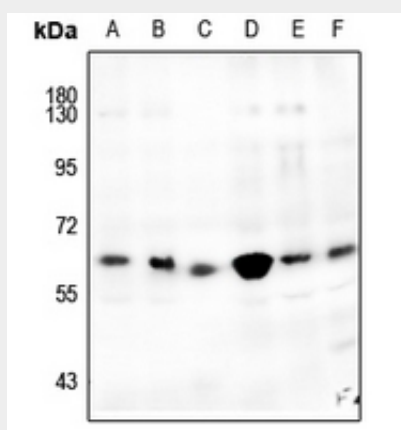
Nucleus.

Anti-CDK8 Antibody - Protocols

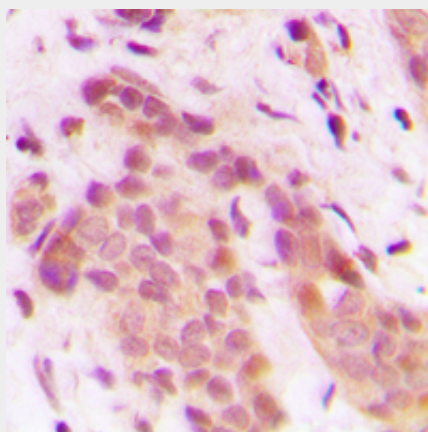
Provided below are standard protocols that you may find useful for product applications.

- [Western Blot](#)
- [Blocking Peptides](#)
- [Dot Blot](#)
- [Immunohistochemistry](#)
- [Immunofluorescence](#)
- [Immunoprecipitation](#)
- [Flow Cytometry](#)
- [Cell Culture](#)

Anti-CDK8 Antibody - Images



Western blot analysis of CDK8 expression in K562 (A), HEK293T (B), CT26 (C), HCT116 (D), EC9706 (E), PC3 (F) whole cell lysates.



Immunohistochemical analysis of CDK8 staining in human breast cancer formalin fixed paraffin embedded tissue section. The section was pre-treated using heat mediated antigen retrieval with sodium citrate buffer (pH 6.0). The section was then incubated with the antibody at room temperature and detected using an HRP conjugated compact polymer system. DAB was used as the chromogen. The section was then counterstained with haematoxylin and mounted with DPX.

Anti-CDK8 Antibody - Background

KLH-conjugated synthetic peptide encompassing a sequence within the N-term region of human CDK8. The exact sequence is proprietary.