

**Anti-CRHR1 Antibody**  
**Rabbit polyclonal antibody to CRHR1**  
**Catalog # AP59991****Specification**

---

**Anti-CRHR1 Antibody - Product Information**

Application	<b>WB</b>
Primary Accession	<a href="#">P34998</a>
Other Accession	<a href="#">P35347</a>
Reactivity	<b>Human, Mouse, Rat</b>
Host	<b>Rabbit</b>
Clonality	<b>Polyclonal</b>
Calculated MW	<b>47671</b>

**Anti-CRHR1 Antibody - Additional Information****Gene ID** 1394**Other Names**CRFR; CRFR1; CRHR; Corticotropin-releasing factor receptor 1; CRF-R-1; CRF-R1; CRFR-1;  
Corticotropin-releasing hormone receptor 1; CRH-R-1; CRH-R1**Target/Specificity**

KLH-conjugated synthetic peptide encompassing a sequence within the center region of human CRHR1. The exact sequence is proprietary.

**Dilution**

WB~~WB (1/500 - 1/1000)

**Format**

Liquid in 0.42% Potassium phosphate, 0.87% Sodium chloride, pH 7.3, 30% glycerol, and 0.09% (W/V) sodium azide.

**Storage**

Store at -20 °C. Stable for 12 months from date of receipt

**Anti-CRHR1 Antibody - Protein Information****Name** CRHR1 ([HGNC:2357](#))**Function**

G-protein coupled receptor for CRH (corticotropin-releasing factor) and UCN (urocortin). Has high affinity for CRH and UCN. Ligand binding causes a conformation change that triggers signaling via guanine nucleotide-binding proteins (G proteins) and down-stream effectors, such as adenylate cyclase. Promotes the activation of adenylate cyclase, leading to increased intracellular cAMP levels. Inhibits the activity of the calcium channel CACNA1H. Required for normal embryonic development of the adrenal gland and for normal hormonal responses to stress. Plays a role in the response to anxiogenic stimuli.

**Cellular Location**

Cell membrane; Multi-pass membrane protein. Endosome. Note=Agonist-binding promotes endocytosis

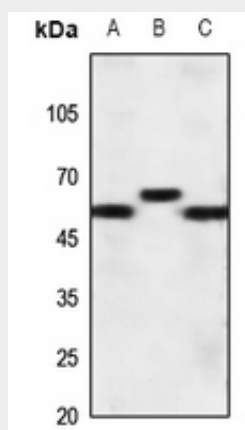
**Tissue Location**

Predominantly expressed in the cerebellum, pituitary, cerebral cortex and olfactory lobe

**Anti-CRHR1 Antibody - Protocols**

Provided below are standard protocols that you may find useful for product applications.

- [Western Blot](#)
- [Blocking Peptides](#)
- [Dot Blot](#)
- [Immunohistochemistry](#)
- [Immunofluorescence](#)
- [Immunoprecipitation](#)
- [Flow Cytometry](#)
- [Cell Culture](#)

**Anti-CRHR1 Antibody - Images**

Western blot analysis of CRHR1 expression in HEK293T (A), Hela (B), DLD (C) whole cell lysates.

**Anti-CRHR1 Antibody - Background**

KLH-conjugated synthetic peptide encompassing a sequence within the center region of human CRHR1. The exact sequence is proprietary.