

Anti-CSK Antibody
Rabbit polyclonal antibody to CSK
Catalog # AP59994**Specification**

Anti-CSK Antibody - Product Information

Application	WB
Primary Accession	P41240
Other Accession	P41241
Reactivity	Human, Mouse, Rat, Monkey, Bovine
Host	Rabbit
Clonality	Polyclonal
Calculated MW	50704

Anti-CSK Antibody - Additional Information**Gene ID** 1445**Other Names**

Tyrosine-protein kinase CSK; C-Src kinase; Protein-tyrosine kinase CYL

Target/Specificity

Recognizes endogenous levels of CSK protein.

Dilution

WB~~WB (1/500 - 1/1000)

Format

Liquid in 0.42% Potassium phosphate, 0.87% Sodium chloride, pH 7.3, 30% glycerol, and 0.09% (W/V) sodium azide.

Storage

Store at -20 °C. Stable for 12 months from date of receipt

Anti-CSK Antibody - Protein Information**Name** CSK**Function**

Non-receptor tyrosine-protein kinase that plays an important role in the regulation of cell growth, differentiation, migration and immune response. Phosphorylates tyrosine residues located in the C-terminal tails of Src-family kinases (SFKs) including LCK, SRC, HCK, FYN, LYN, CSK or YES1. Upon tail phosphorylation, Src-family members engage in intramolecular interactions between the phosphotyrosine tail and the SH2 domain that result in an inactive conformation. To inhibit SFKs, CSK is recruited to the plasma membrane via binding to transmembrane proteins or adapter proteins located near the plasma membrane. Suppresses signaling by various surface receptors, including T-cell receptor (TCR) and B-cell receptor (BCR) by phosphorylating and maintaining inactive several positive effectors such as FYN or LCK.

Cellular Location

Cytoplasm. Cell membrane. Note=Mainly cytoplasmic, also present in lipid rafts

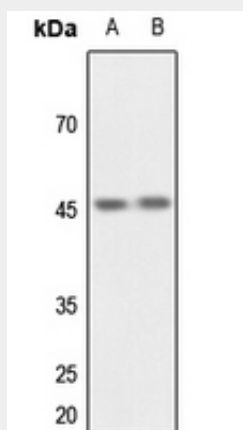
Tissue Location

Expressed in lung and macrophages.

Anti-CSK Antibody - Protocols

Provided below are standard protocols that you may find useful for product applications.

- [Western Blot](#)
- [Blocking Peptides](#)
- [Dot Blot](#)
- [Immunohistochemistry](#)
- [Immunofluorescence](#)
- [Immunoprecipitation](#)
- [Flow Cytometry](#)
- [Cell Culture](#)

Anti-CSK Antibody - Images

Western blot analysis of CSK expression in mouse spleen (A), rat spleen (B) whole cell lysates.

Anti-CSK Antibody - Background

KLH-conjugated synthetic peptide encompassing a sequence within the N-term region of human CSK. The exact sequence is proprietary.