

Anti-CstF-50 Antibody
Rabbit polyclonal antibody to CstF-50
Catalog # AP59995**Specification**

Anti-CstF-50 Antibody - Product Information

Application	WB, IH
Primary Accession	Q05048
Other Accession	Q99LC2
Reactivity	Human, Mouse, Rat, Pig, Bovine
Host	Rabbit
Clonality	Polyclonal
Calculated MW	48358

Anti-CstF-50 Antibody - Additional Information**Gene ID** 1477**Other Names**

Cleavage stimulation factor subunit 1; CF-1 50 kDa subunit; Cleavage stimulation factor 50 kDa subunit; CSTF 50 kDa subunit; CstF-50

Target/Specificity

Recognizes endogenous levels of CstF-50 protein.

Dilution

WB~~WB (1/500 - 1/1000), IH (1/100 - 1/200)

IH~~WB (1/500 - 1/1000), IH (1/100 - 1/200)

Format

Liquid in 0.42% Potassium phosphate, 0.87% Sodium chloride, pH 7.3, 30% glycerol, and 0.09% (W/V) sodium azide.

Storage

Store at -20 °C. Stable for 12 months from date of receipt

Anti-CstF-50 Antibody - Protein Information**Name** CSTF1**Function**

One of the multiple factors required for polyadenylation and 3'-end cleavage of mammalian pre-mRNAs (PubMed:10669729). May be responsible for the interaction of CSTF with other factors to form a stable complex on the pre-mRNA (PubMed:10669729).

Cellular Location

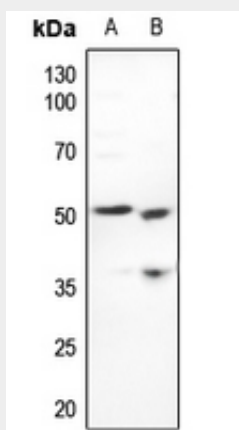
Nucleus.

Anti-CstF-50 Antibody - Protocols

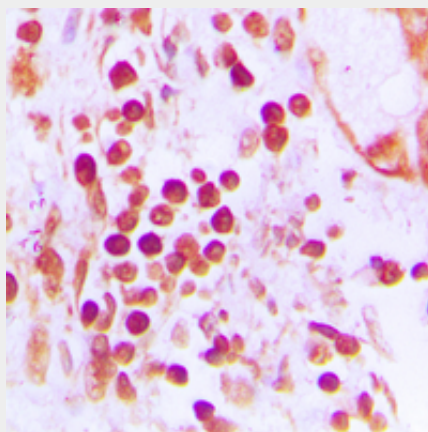
Provided below are standard protocols that you may find useful for product applications.

- [Western Blot](#)
- [Blocking Peptides](#)
- [Dot Blot](#)
- [Immunohistochemistry](#)
- [Immunofluorescence](#)
- [Immunoprecipitation](#)
- [Flow Cytometry](#)
- [Cell Culture](#)

Anti-CstF-50 Antibody - Images



Western blot analysis of CstF-50 expression in H446 (A), mouse kidney (B) whole cell lysates.



Immunohistochemical analysis of CstF-50 staining in human prostate cancer formalin fixed paraffin embedded tissue section. The section was pre-treated using heat mediated antigen retrieval with sodium citrate buffer (pH 6.0). The section was then incubated with the antibody at room temperature and detected using an HRP conjugated compact polymer system. DAB was used as the chromogen. The section was then counterstained with haematoxylin and mounted with DPX.

Anti-CstF-50 Antibody - Background

KLH-conjugated synthetic peptide encompassing a sequence within the N-term region of human CstF-50. The exact sequence is proprietary.