

Anti-Cytochrome P450 2A6 Antibody
Rabbit polyclonal antibody to Cytochrome P450 2A6
Catalog # AP59997

Specification

Anti-Cytochrome P450 2A6 Antibody - Product Information

Application	WB, IF/IC
Primary Accession	P11509
Reactivity	Human, Rat
Host	Rabbit
Clonality	Polyclonal
Calculated MW	56517

Anti-Cytochrome P450 2A6 Antibody - Additional Information

Gene ID 1548

Other Names

CYP2A3; Cytochrome P450 2A6; 1, 4-cineole 2-exo-monooxygenase; CYP1IA6; Coumarin 7-hydroxylase; Cytochrome P450 IIA3; Cytochrome P450(I)

Target/Specificity

KLH-conjugated synthetic peptide encompassing a sequence within the N-term region of human Cytochrome P450 2A6. The exact sequence is proprietary.

Dilution

WB~~WB (1/500 - 1/1000), IF/IC (1/100 - 1/500)
IF/IC~~N/A

Format

Liquid in 0.42% Potassium phosphate, 0.87% Sodium chloride, pH 7.3, 30% glycerol, and 0.09% (W/V) sodium azide.

Storage

Store at -20 °C.Stable for 12 months from date of receipt

Anti-Cytochrome P450 2A6 Antibody - Protein Information

Name CYP2A6

Synonyms CYP2A3

Function

Exhibits a high coumarin 7-hydroxylase activity. Can act in the hydroxylation of the anti-cancer drugs cyclophosphamide and ifosfamide. Competent in the metabolic activation of aflatoxin B1. Constitutes the major nicotine C-oxidase. Acts as a 1,4-cineole 2-exo- monooxygenase. Possesses low phenacetin O-deethylation activity.

Cellular Location

Endoplasmic reticulum membrane; Peripheral membrane protein. Microsome membrane; Peripheral membrane protein

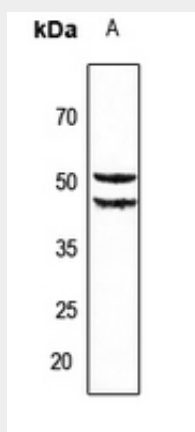
Tissue Location

Liver.

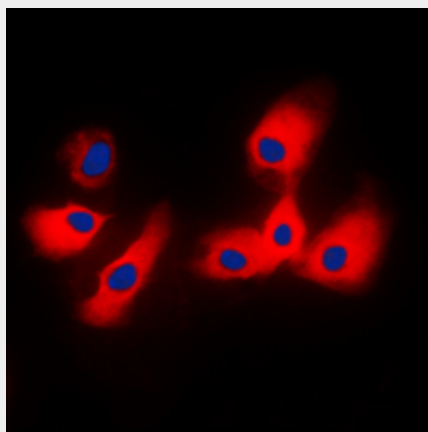
Anti-Cytochrome P450 2A6 Antibody - Protocols

Provided below are standard protocols that you may find useful for product applications.

- [Western Blot](#)
- [Blocking Peptides](#)
- [Dot Blot](#)
- [Immunohistochemistry](#)
- [Immunofluorescence](#)
- [Immunoprecipitation](#)
- [Flow Cytometry](#)
- [Cell Culture](#)

Anti-Cytochrome P450 2A6 Antibody - Images

Western blot analysis of Cytochrome P450 2A6 expression in rat liver (A) whole cell lysates.



Immunofluorescent analysis of Cytochrome P450 2A6 staining in HeLa cells. Formalin-fixed cells were permeabilized with 0.1% Triton X-100 in TBS for 5-10 minutes and blocked with 3% BSA-PBS

for 30 minutes at room temperature. Cells were probed with the primary antibody in 3% BSA-PBS and incubated overnight at 4 °C in a humidified chamber. Cells were washed with PBST and incubated with a DyLight 594-conjugated secondary antibody (red) in PBS at room temperature in the dark. DAPI was used to stain the cell nuclei (blue).

Anti-Cytochrome P450 2A6 Antibody - Background

KLH-conjugated synthetic peptide encompassing a sequence within the N-term region of human Cytochrome P450 2A6. The exact sequence is proprietary.