

Anti-DUSP1 Antibody
Rabbit polyclonal antibody to DUSP1
Catalog # AP59999**Specification**

Anti-DUSP1 Antibody - Product Information

Application	WB, IHC
Primary Accession	P28562
Reactivity	Human, Mouse, Rat, Chicken, Bovine, SARS
Host	Rabbit
Clonality	Polyclonal
Calculated MW	39298

Anti-DUSP1 Antibody - Additional Information**Gene ID** 1843**Other Names**

CL100; MKP1; PTPN10; VH1; Dual specificity protein phosphatase 1; Dual specificity protein phosphatase hVH1; Mitogen-activated protein kinase phosphatase 1; MAP kinase phosphatase 1; MKP-1; Protein-tyrosine phosphatase CL100

Target/Specificity

KLH-conjugated synthetic peptide encompassing a sequence within the C-term region of human DUSP1. The exact sequence is proprietary.

Dilution

WB~~WB (1/500 - 1/1000), IH (1/100 - 1/200)
IHC~~1:100~500

Format

Liquid in 0.42% Potassium phosphate, 0.87% Sodium chloride, pH 7.3, 30% glycerol, and 0.09% (W/V) sodium azide.

Storage

Store at -20 °C. Stable for 12 months from date of receipt

Anti-DUSP1 Antibody - Protein Information**Name** DUSP1 ([HGNC:3064](#))**Function**

Dual specificity phosphatase that dephosphorylates MAP kinase MAPK1/ERK2 on both 'Thr-183' and 'Tyr-185', regulating its activity during the meiotic cell cycle.

Cellular Location

Nucleus {ECO:0000250|UniProtKB:Q91790}.

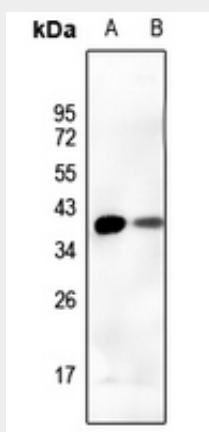
Tissue Location

Expressed at high levels in the lung, liver placenta and pancreas. Moderate levels seen in the heart and skeletal muscle. Lower levels found in the brain and kidney

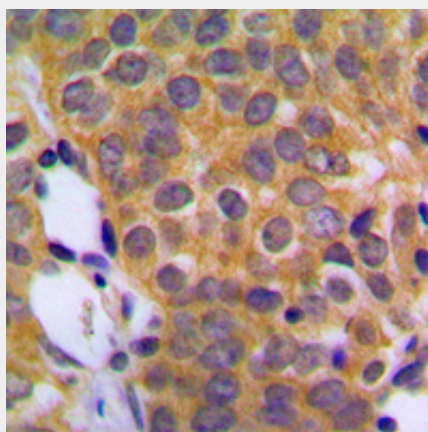
Anti-DUSP1 Antibody - Protocols

Provided below are standard protocols that you may find useful for product applications.

- [Western Blot](#)
- [Blocking Peptides](#)
- [Dot Blot](#)
- [Immunohistochemistry](#)
- [Immunofluorescence](#)
- [Immunoprecipitation](#)
- [Flow Cytometry](#)
- [Cell Culture](#)

Anti-DUSP1 Antibody - Images

Western blot analysis of DUSP1 expression in rat liver (A), mouse liver (B) whole cell lysates.



Immunohistochemical analysis of DUSP1 staining in human prostate cancer formalin fixed paraffin embedded tissue section. The section was pre-treated using heat mediated antigen retrieval with sodium citrate buffer (pH 6.0). The section was then incubated with the antibody at room temperature and detected using an HRP conjugated compact polymer system. DAB was used as the chromogen. The section was then counterstained with haematoxylin and mounted

with DPX.

Anti-DUSP1 Antibody - Background

KLH-conjugated synthetic peptide encompassing a sequence within the C-term region of human DUSP1. The exact sequence is proprietary.