

**Anti-MEGF9 Antibody**  
Rabbit polyclonal antibody to MEGF9  
Catalog # AP60001

**Specification**

---

**Anti-MEGF9 Antibody - Product Information**

Application	WB
Primary Accession	<a href="#">O9H1U4</a>
Reactivity	Human, Rat, Monkey
Host	Rabbit
Clonality	Polyclonal
Calculated MW	62984

**Anti-MEGF9 Antibody - Additional Information**

**Gene ID** 1955

**Other Names**

EGFL5; KIAA0818; Multiple epidermal growth factor-like domains protein 9; Multiple EGF-like domains protein 9; Epidermal growth factor-like protein 5; EGF-like protein 5

**Target/Specificity**

KLH-conjugated synthetic peptide encompassing a sequence within the center region of human MEGF9. The exact sequence is proprietary.

**Dilution**

WB~~WB (1/500 - 1/1000)

**Format**

Liquid in 0.42% Potassium phosphate, 0.87% Sodium chloride, pH 7.3, 30% glycerol, and 0.09% (W/V) sodium azide.

**Storage**

Store at -20 °C. Stable for 12 months from date of receipt

**Anti-MEGF9 Antibody - Protein Information**

**Name** MEGF9

**Synonyms** EGFL5, KIAA0818

**Cellular Location**

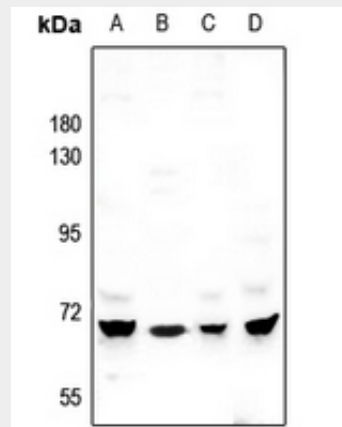
Membrane; Single-pass type I membrane protein

**Anti-MEGF9 Antibody - Protocols**

Provided below are standard protocols that you may find useful for product applications.

- [Western Blot](#)
- [Blocking Peptides](#)
- [Dot Blot](#)
- [Immunohistochemistry](#)
- [Immunofluorescence](#)
- [Immunoprecipitation](#)
- [Flow Cytometry](#)
- [Cell Culture](#)

#### Anti-MEGF9 Antibody - Images



Western blot analysis of MEGF9 expression in A549 (A), HepG2 (B), LO2 (C), PC12 (D) whole cell lysates.

#### Anti-MEGF9 Antibody - Background

KLH-conjugated synthetic peptide encompassing a sequence within the center region of human MEGF9. The exact sequence is proprietary.