

**Anti-NET (pS357) Antibody**  
**Rabbit polyclonal antibody to NET (pS357)**  
**Catalog # AP60002****Specification**

---

**Anti-NET (pS357) Antibody - Product Information**

Application	WB, IF
Primary Accession	<a href="#">P41970</a>
Other Accession	<a href="#">P41971</a>
Reactivity	Human, Mouse, Rat, Zebrafish, Bovine
Host	Rabbit
Clonality	Polyclonal
Calculated MW	44240

**Anti-NET (pS357) Antibody - Additional Information****Gene ID** 2004**Other Names**

NET; SAP2; ETS domain-containing protein Elk-3; ETS-related protein ERP; ETS-related protein NET; Serum response factor accessory protein 2; SAP-2; SRF accessory protein 2

**Target/Specificity**

Recognizes endogenous levels of NET (pS357) protein.

**Dilution**WB~~WB (1/500 - 1/1000), IF/IC (1/100 - 1/500), IP (1/10 - 1/100)  
IF~~WB (1/500 - 1/1000), IF/IC (1/100 - 1/500), IP (1/10 - 1/100)**Format**

Liquid in 0.42% Potassium phosphate, 0.87% Sodium chloride, pH 7.3, 30% glycerol, and 0.09% (W/V) sodium azide.

**Storage**

Store at -20 °C. Stable for 12 months from date of receipt

**Anti-NET (pS357) Antibody - Protein Information****Name** ELK3**Synonyms** NET, SAP2**Function**

May be a negative regulator of transcription, but can activate transcription when coexpressed with Ras, Src or Mos. Forms a ternary complex with the serum response factor and the ETS and SRF motifs of the Fos serum response element.

**Cellular Location**

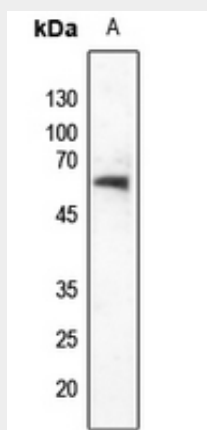
Nucleus.

### Anti-NET (pS357) Antibody - Protocols

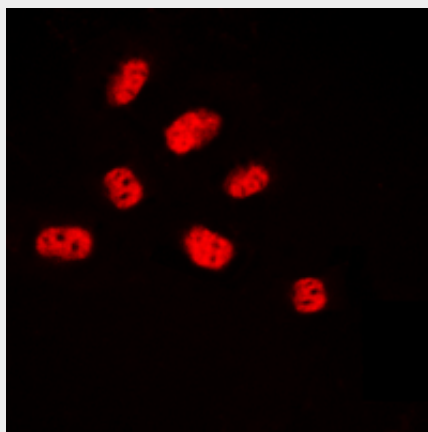
Provided below are standard protocols that you may find useful for product applications.

- [Western Blot](#)
- [Blocking Peptides](#)
- [Dot Blot](#)
- [Immunohistochemistry](#)
- [Immunofluorescence](#)
- [Immunoprecipitation](#)
- [Flow Cytometry](#)
- [Cell Culture](#)

### Anti-NET (pS357) Antibody - Images



Western blot analysis of NET (pS357) expression in zebrafish (A) whole cell lysates.



Immunofluorescent analysis of NET (pS357) staining in HUVEC cells. Formalin-fixed cells were permeabilized with 0.1% Triton X-100 in TBS for 5-10 minutes and blocked with 3% BSA-PBS for 30 minutes at room temperature. Cells were probed with the primary antibody in 3% BSA-PBS and incubated overnight at 4 °C in a humidified chamber. Cells were washed with PBST and incubated with a DyLight 594-conjugated secondary antibody (red) in PBS at room temperature in the dark.

### Anti-NET (pS357) Antibody - Background

KLH-conjugated synthetic peptide encompassing a sequence within the C-term region of human NET (pS357). The exact sequence is proprietary.