

Anti-GCKR Antibody
Rabbit polyclonal antibody to GCKR
Catalog # AP60006**Specification**

Anti-GCKR Antibody - Product Information

Application	WB
Primary Accession	Q14397
Other Accession	Q91X44
Reactivity	Human, Mouse, Rat, Monkey
Host	Rabbit
Clonality	Polyclonal
Calculated MW	68685

Anti-GCKR Antibody - Additional Information**Gene ID** 2646**Other Names**

Glucokinase regulatory protein; GKR; Glucokinase regulator

Target/Specificity

Recognizes endogenous levels of GCKR protein.

Dilution

WB~~WB (1/500 - 1/1000)

Format

Liquid in 0.42% Potassium phosphate, 0.87% Sodium chloride, pH 7.3, 30% glycerol, and 0.09% (W/V) sodium azide.

Storage

Store at -20 °C. Stable for 12 months from date of receipt

Anti-GCKR Antibody - Protein Information**Name** GCKR {ECO:0000303|PubMed:8589523, ECO:0000312|HGNC:HGNC:4196}**Function**

Regulates glucokinase (GCK) by forming an inactive complex with this enzyme (PubMed:23621087, PubMed:23733961). Acts by promoting GCK recruitment to the nucleus, possibly to provide a reserve of GCK that can be quickly released in the cytoplasm after a meal (PubMed:10456334). The affinity of GCKR for GCK is modulated by fructose metabolites: GCKR with bound fructose 6-phosphate has increased affinity for GCK, while GCKR with bound fructose 1-phosphate has strongly decreased affinity for GCK and does not inhibit GCK activity (PubMed:23621087, PubMed:23733961).

Cellular Location

Cytoplasm. Nucleus. Mitochondrion {ECO:0000250|UniProtKB:Q07071}. Note=Under low glucose concentrations, GCKR associates with GCK and the inactive complex is recruited to the hepatocyte nucleus.

Tissue Location

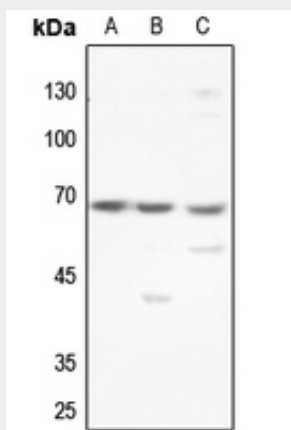
Found in liver and pancreas. Not detected in muscle, brain, heart, thymus, intestine, uterus, adipose tissue, kidney, adrenal, lung or spleen.

Anti-GCKR Antibody - Protocols

Provided below are standard protocols that you may find useful for product applications.

- [Western Blot](#)
- [Blocking Peptides](#)
- [Dot Blot](#)
- [Immunohistochemistry](#)
- [Immunofluorescence](#)
- [Immunoprecipitation](#)
- [Flow Cytometry](#)
- [Cell Culture](#)

Anti-GCKR Antibody - Images



Western blot analysis of GCKR expression in HEK293T (A), Hela (B), HGC27 (C) whole cell lysates.

Anti-GCKR Antibody - Background

KLH-conjugated synthetic peptide encompassing a sequence within the center region of human GCKR. The exact sequence is proprietary.