

Anti-Connexin 37 Antibody
Rabbit polyclonal antibody to Connexin 37
Catalog # AP60007**Specification**

Anti-Connexin 37 Antibody - Product Information

Application	WB
Primary Accession	P35212
Other Accession	P28235
Reactivity	Human, Mouse, Rat, Rabbit, Pig, Bovine, SARS
Host	Rabbit
Clonality	Polyclonal
Calculated MW	37414

Anti-Connexin 37 Antibody - Additional Information**Gene ID** 2701**Other Names**

Gap junction alpha-4 protein; Connexin-37; Cx37

Target/Specificity

Recognizes endogenous levels of Connexin 37 protein.

Dilution

WB~~WB (1/500 - 1/1000)

Format

Liquid in 0.42% Potassium phosphate, 0.87% Sodium chloride, pH 7.3, 30% glycerol, and 0.09% (W/V) sodium azide.

Storage

Store at -20 °C. Stable for 12 months from date of receipt

Anti-Connexin 37 Antibody - Protein Information**Name** GJA4**Function**

One gap junction consists of a cluster of closely packed pairs of transmembrane channels, the connexons, through which materials of low MW diffuse from one cell to a neighboring cell.

Cellular Location

Cell membrane; Multi-pass membrane protein. Cell junction, gap junction

Tissue Location

Expressed in multiple organs and tissues, including heart, uterus, ovary, and blood vessel

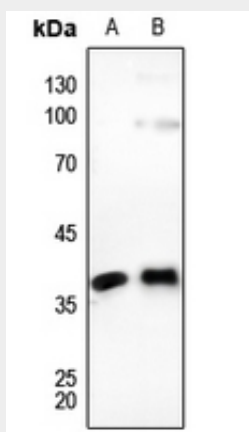
endothelium

Anti-Connexin 37 Antibody - Protocols

Provided below are standard protocols that you may find useful for product applications.

- [Western Blot](#)
- [Blocking Peptides](#)
- [Dot Blot](#)
- [Immunohistochemistry](#)
- [Immunofluorescence](#)
- [Immunoprecipitation](#)
- [Flow Cytometry](#)
- [Cell Culture](#)

Anti-Connexin 37 Antibody - Images



Western blot analysis of Connexin 37 expression in HEK293T (A), HeLa (B) whole cell lysates.

Anti-Connexin 37 Antibody - Background

KLH-conjugated synthetic peptide encompassing a sequence within the center region of human Connexin 37. The exact sequence is proprietary.