

Anti-Histone H1.0 Antibody
Rabbit polyclonal antibody to Histone H1.0
Catalog # AP60009**Specification**

Anti-Histone H1.0 Antibody - Product Information

Application	WB, IHC
Primary Accession	P07305
Other Accession	P10922
Reactivity	Human, Mouse, Rat, Monkey
Host	Rabbit
Clonality	Polyclonal
Calculated MW	20863

Anti-Histone H1.0 Antibody - Additional Information**Gene ID** 3005**Other Names**

H1FV; Histone H1.0; Histone H1'; Histone H1(0)

Target/Specificity

Recognizes endogenous levels of Histone H1.0 protein.

Dilution

WB~~WB (1/500 - 1/1000), IH (1/100 - 1/200)

IHC~~1:100~500

Format

Liquid in 0.42% Potassium phosphate, 0.87% Sodium chloride, pH 7.3, 30% glycerol, and 0.09% (W/V) sodium azide.

Storage

Store at -20 °C. Stable for 12 months from date of receipt

Anti-Histone H1.0 Antibody - Protein Information**Name** H1-0 ([HGNC:4714](#))**Function**

Histones H1 are necessary for the condensation of nucleosome chains into higher-order structures. The histones H1.0 are found in cells that are in terminal stages of differentiation or that have low rates of cell division.

Cellular Location

Nucleus {ECO:0000255|PROSITE-ProRule:PRU00837, ECO:0000269|PubMed:18993075}.

Chromosome {ECO:0000255|PROSITE-ProRule:PRU00837, ECO:0000269|PubMed:18993075}.

Note=The RNA edited version has been localized to nuclear speckles. During mitosis, it appears in

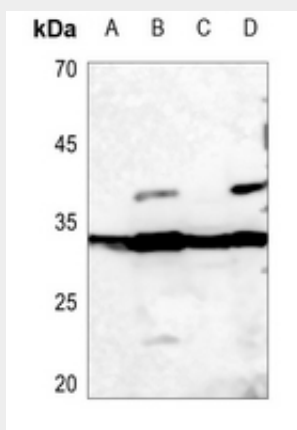
the vicinity of condensed chromosomes

Anti-Histone H1.0 Antibody - Protocols

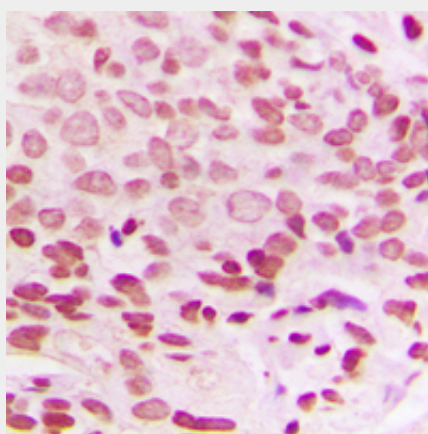
Provided below are standard protocols that you may find useful for product applications.

- [Western Blot](#)
- [Blocking Peptides](#)
- [Dot Blot](#)
- [Immunohistochemistry](#)
- [Immunofluorescence](#)
- [Immunoprecipitation](#)
- [Flow Cytometry](#)
- [Cell Culture](#)

Anti-Histone H1.0 Antibody - Images



Western blot analysis of Histone H1.0 expression in mouse liver (A), mouse kidney (B), rat liver (C), rat kidney (D) whole cell lysates.



Immunohistochemical analysis of Histone H1.0 staining in human breast cancer formalin fixed paraffin embedded tissue section. The section was pre-treated using heat mediated antigen retrieval with sodium citrate buffer (pH 6.0). The section was then incubated with the antibody at room temperature and detected using an HRP conjugated compact polymer system. DAB was used as the chromogen. The section was then counterstained with haematoxylin and mounted with DPX.

Anti-Histone H1.0 Antibody - Background

KLH-conjugated synthetic peptide encompassing a sequence within the center region of human Histone H1.0. The exact sequence is proprietary.