

Anti-HARS Antibody
Rabbit polyclonal antibody to HARS
Catalog # AP60010**Specification**

Anti-HARS Antibody - Product Information

Application	WB, IF/IC, IHC
Primary Accession	P12081
Other Accession	Q61035
Reactivity	Human, Mouse, Rat, Monkey
Host	Rabbit
Clonality	Polyclonal
Calculated MW	57411

Anti-HARS Antibody - Additional Information**Gene ID** 3035**Other Names**

HRS; Histidine--tRNA ligase, cytoplasmic; Histidyl-tRNA synthetase; HisRS

Target/Specificity

Recognizes endogenous levels of HARS protein.

Dilution

WB~~WB (1/500 - 1/1000), IH (1/100 - 1/200), IF/IC (1/100 - 1/500)

IF/IC~~N/A

IHC~~1:100~500

Format

Liquid in 0.42% Potassium phosphate, 0.87% Sodium chloride, pH 7.3, 30% glycerol, and 0.09% (W/V) sodium azide.

Storage

Store at -20 °C. Stable for 12 months from date of receipt

Anti-HARS Antibody - Protein Information**Name** HARS1 ([HGNC:4816](#))**Synonyms** HARS, HRS**Function**

Catalyzes the ATP-dependent ligation of histidine to the 3'- end of its cognate tRNA, via the formation of an aminoacyl-adenylate intermediate (His-AMP) (PubMed:29235198). Plays a role in axon guidance (PubMed:26072516).

Cellular Location

Cytoplasm {ECO:0000250|UniProtKB:F1Q5D5}.

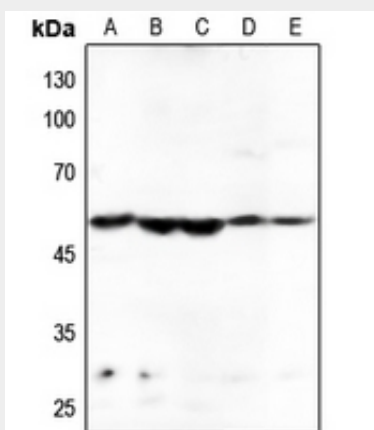
Tissue Location

Brain, heart, liver and kidney.

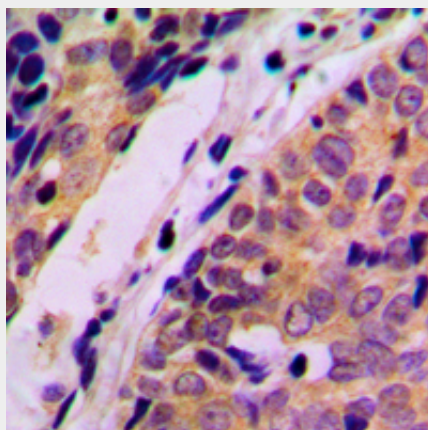
Anti-HARS Antibody - Protocols

Provided below are standard protocols that you may find useful for product applications.

- [Western Blot](#)
- [Blocking Peptides](#)
- [Dot Blot](#)
- [Immunohistochemistry](#)
- [Immunofluorescence](#)
- [Immunoprecipitation](#)
- [Flow Cytometry](#)
- [Cell Culture](#)

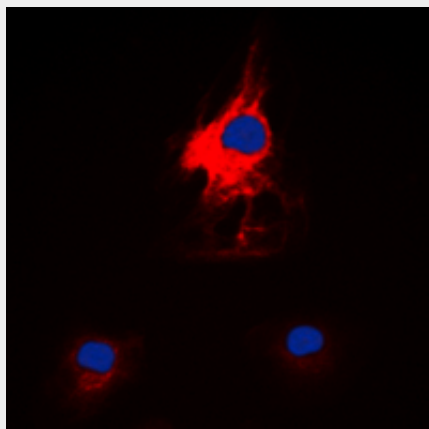
Anti-HARS Antibody - Images

Western blot analysis of HARS expression in HEK293T (A), Hela (B), HGC27 (C), mouse spleen (D), rat spleen (E) whole cell lysates.



Immunohistochemical analysis of HARS staining in human breast cancer formalin fixed paraffin embedded tissue section. The section was pre-treated using heat mediated antigen retrieval with

sodium citrate buffer (pH 6.0). The section was then incubated with the antibody at room temperature and detected using an HRP conjugated compact polymer system. DAB was used as the chromogen. The section was then counterstained with haematoxylin and mounted with DPX.



Immunofluorescent analysis of HARS staining in K562 cells. Formalin-fixed cells were permeabilized with 0.1% Triton X-100 in TBS for 5-10 minutes and blocked with 3% BSA-PBS for 30 minutes at room temperature. Cells were probed with the primary antibody in 3% BSA-PBS and incubated overnight at 4 °C in a humidified chamber. Cells were washed with PBST and incubated with a DyLight 594-conjugated secondary antibody (red) in PBS at room temperature in the dark. DAPI was used to stain the cell nuclei (blue).

Anti-HARS Antibody - Background

KLH-conjugated synthetic peptide encompassing a sequence within the C-term region of human HARS. The exact sequence is proprietary.