

Anti-Hexokinase 3 Antibody
Rabbit polyclonal antibody to Hexokinase 3
Catalog # AP60013**Specification**

Anti-Hexokinase 3 Antibody - Product Information

Application	WB, IH
Primary Accession	P52790
Reactivity	Human, Mouse
Host	Rabbit
Clonality	Polyclonal
Calculated MW	99025

Anti-Hexokinase 3 Antibody - Additional Information**Gene ID** 3101**Other Names**

Hexokinase-3; Hexokinase type III; HK III

Target/Specificity

Recognizes endogenous levels of Hexokinase 3 protein.

Dilution

WB~~WB (1/500 - 1/1000), IH (1/100 - 1/200)

IH~~WB (1/500 - 1/1000), IH (1/100 - 1/200)

Format

Liquid in 0.42% Potassium phosphate, 0.87% Sodium chloride, pH 7.3, 30% glycerol, and 0.09% (W/V) sodium azide.

Storage

Store at -20 °C. Stable for 12 months from date of receipt

Anti-Hexokinase 3 Antibody - Protein Information**Name** HK3 ([HGNC:4925](#))**Function**

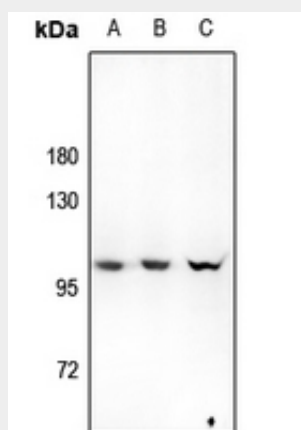
Catalyzes the phosphorylation of hexose, such as D-glucose and D-fructose, to hexose 6-phosphate (D-glucose 6-phosphate and D-fructose 6-phosphate, respectively) (PubMed: [8717435](http://www.uniprot.org/citations/8717435)). Mediates the initial step of glycolysis by catalyzing phosphorylation of D-glucose to D-glucose 6-phosphate (PubMed: [8717435](http://www.uniprot.org/citations/8717435)).

Anti-Hexokinase 3 Antibody - Protocols

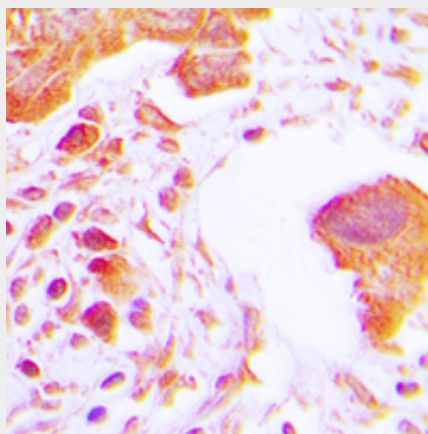
Provided below are standard protocols that you may find useful for product applications.

- [Western Blot](#)
- [Blocking Peptides](#)
- [Dot Blot](#)
- [Immunohistochemistry](#)
- [Immunofluorescence](#)
- [Immunoprecipitation](#)
- [Flow Cytometry](#)
- [Cell Culture](#)

Anti-Hexokinase 3 Antibody - Images



Western blot analysis of Hexokinase 3 expression in LO2 (A), A549 (B), AML12 (C) whole cell lysates.



Immunohistochemical analysis of Hexokinase 3 staining in human lung cancer formalin fixed paraffin embedded tissue section. The section was pre-treated using heat mediated antigen retrieval with sodium citrate buffer (pH 6.0). The section was then incubated with the antibody at room temperature and detected using an HRP conjugated compact polymer system. DAB was used as the chromogen. The section was then counterstained with haematoxylin and mounted with DPX.

Anti-Hexokinase 3 Antibody - Background

KLH-conjugated synthetic peptide encompassing a sequence within the C-term region of human Hexokinase 3. The exact sequence is proprietary.