

Anti-IL-16 Antibody
Rabbit polyclonal antibody to IL-16
Catalog # AP60018**Specification**

Anti-IL-16 Antibody - Product Information

Application	WB, IP
Primary Accession	Q14005
Other Accession	O54824
Reactivity	Human, Mouse, Rat
Host	Rabbit
Clonality	Polyclonal
Calculated MW	141752

Anti-IL-16 Antibody - Additional Information**Gene ID** 3603**Other Names**

Pro-interleukin-16

Target/Specificity

Recognizes endogenous levels of IL-16 protein.

Dilution

WB~~WB (1/500 - 1/1000), IP (1/10 - 1/100)

IP~~N/A

Format

Liquid in 0.42% Potassium phosphate, 0.87% Sodium chloride, pH 7.3, 30% glycerol, and 0.09% (W/V) sodium azide.

Storage

Store at -20 °C. Stable for 12 months from date of receipt

Anti-IL-16 Antibody - Protein Information**Name** IL16**Function**

Interleukin-16 stimulates a migratory response in CD4+ lymphocytes, monocytes, and eosinophils. Primes CD4+ T-cells for IL-2 and IL-15 responsiveness. Also induces T-lymphocyte expression of interleukin 2 receptor. Ligand for CD4. Isoform 3 is involved in cell cycle progression in T-cells. Appears to be involved in transcriptional regulation of SKP2 and is probably part of a transcriptional repression complex on the core promoter of the SKP2 gene. May act as a scaffold for GABPB1 (the DNA-binding subunit of the GABP transcription factor complex) and HDAC3 thus maintaining transcriptional repression and blocking cell cycle progression in resting T-cells.

Cellular Location

[Interleukin-16]: Secreted. [Isoform 3]: Cytoplasm. Nucleus.

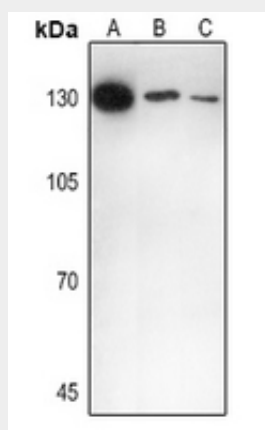
Tissue Location

[Isoform 3]: Expressed in hemopoietic tissues, such as resting T-cells, but undetectable during active T-cell proliferation

Anti-IL-16 Antibody - Protocols

Provided below are standard protocols that you may find useful for product applications.

- [Western Blot](#)
- [Blocking Peptides](#)
- [Dot Blot](#)
- [Immunohistochemistry](#)
- [Immunofluorescence](#)
- [Immunoprecipitation](#)
- [Flow Cytometry](#)
- [Cell Culture](#)

Anti-IL-16 Antibody - Images

Western blot analysis of IL-16 expression in HEK293T (A), mouse brain (B), rat liver (C) whole cell lysates.

Anti-IL-16 Antibody - Background

KLH-conjugated synthetic peptide encompassing a sequence within the C-term region of human IL-16. The exact sequence is proprietary.