

Anti-MNDA Antibody
Rabbit polyclonal antibody to MNDA
Catalog # AP60032**Specification**

Anti-MNDA Antibody - Product Information

Application	WB, IH
Primary Accession	P41218
Reactivity	Human
Host	Rabbit
Clonality	Polyclonal
Calculated MW	45836

Anti-MNDA Antibody - Additional Information**Gene ID** 4332**Other Names**

Myeloid cell nuclear differentiation antigen

Target/Specificity

Recognizes endogenous levels of MNDA protein.

Dilution

WB~~WB (1/500 - 1/1000), IH (1/100 - 1/200)

IH~~WB (1/500 - 1/1000), IH (1/100 - 1/200)

Format

Liquid in 0.42% Potassium phosphate, 0.87% Sodium chloride, pH 7.3, 30% glycerol, and 0.09% (W/V) sodium azide.

Storage

Store at -20 °C. Stable for 12 months from date of receipt

Anti-MNDA Antibody - Protein Information**Name** MNDA**Function**

May act as a transcriptional activator/repressor in the myeloid lineage. Plays a role in the granulocyte/monocyte cell-specific response to interferon. Stimulates the DNA binding of the transcriptional repressor protein YY1.

Cellular Location

Nucleus. Cytoplasm. Note=Uniformly distributed throughout the interphase cell nucleus. Associates with chromatin

Tissue Location

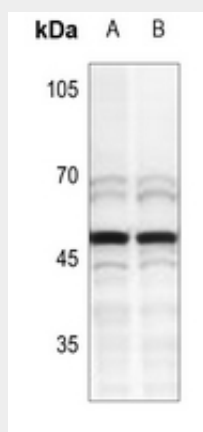
Expressed constitutively in cells of the myeloid lineage. Found in promyelocyte stage cells as well as in all other stage cells including peripheral blood monocytes and granulocytes. Also appears in myeloblast cells in some cases of acute myeloid Leukemia

Anti-MNDA Antibody - Protocols

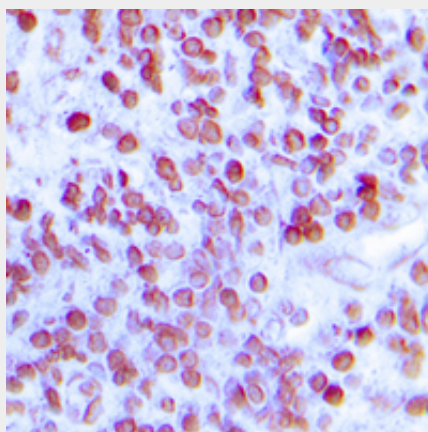
Provided below are standard protocols that you may find useful for product applications.

- [Western Blot](#)
- [Blocking Peptides](#)
- [Dot Blot](#)
- [Immunohistochemistry](#)
- [Immunofluorescence](#)
- [Immunoprecipitation](#)
- [Flow Cytometry](#)
- [Cell Culture](#)

Anti-MNDA Antibody - Images



Western blot analysis of MNDA expression in A549 (A), A375 (B) whole cell lysates.



Immunohistochemical analysis of MNDA staining in human lymph node formalin fixed paraffin embedded tissue section. The section was pre-treated using heat mediated antigen retrieval with sodium citrate buffer (pH 6.0). The section was then incubated with the antibody at room temperature and detected using an HRP conjugated compact polymer system. DAB was used as the chromogen. The section was then counterstained with haematoxylin and mounted with DPX.

Anti-MNDA Antibody - Background

KLH-conjugated synthetic peptide encompassing a sequence within the C-term region of human MNDA. The exact sequence is proprietary.