

Anti-NAB2 Antibody
Rabbit polyclonal antibody to NAB2
Catalog # AP60035**Specification**

Anti-NAB2 Antibody - Product Information

Application	WB, IH
Primary Accession	Q15742
Other Accession	Q61127
Reactivity	Human, Mouse, Rat, Bovine
Host	Rabbit
Clonality	Polyclonal
Calculated MW	56594

Anti-NAB2 Antibody - Additional Information**Gene ID** 4665**Other Names**

MADER; NGFI-A-binding protein 2; EGR-1-binding protein 2; Melanoma-associated delayed early response protein; Protein MADER

Target/Specificity

Recognizes endogenous levels of NAB2 protein.

Dilution

WB~~WB (1/500 - 1/1000), IH (1/100 - 1/200)

IH~~WB (1/500 - 1/1000), IH (1/100 - 1/200)

Format

Liquid in 0.42% Potassium phosphate, 0.87% Sodium chloride, pH 7.3, 30% glycerol, and 0.09% (W/V) sodium azide.

Storage

Store at -20 °C. Stable for 12 months from date of receipt

Anti-NAB2 Antibody - Protein Information**Name** NAB2**Synonyms** MADER**Function**

Acts as a transcriptional repressor for zinc finger transcription factors EGR1 and EGR2. Isoform 2 lacks repression ability (By similarity).

Cellular Location

Nucleus. Note=Isoform 2 is not localized to the nucleus.

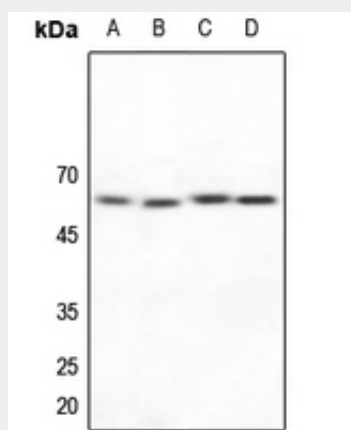
Tissue Location

Widely expressed at low levels. Highly expressed in melanoma cell lines

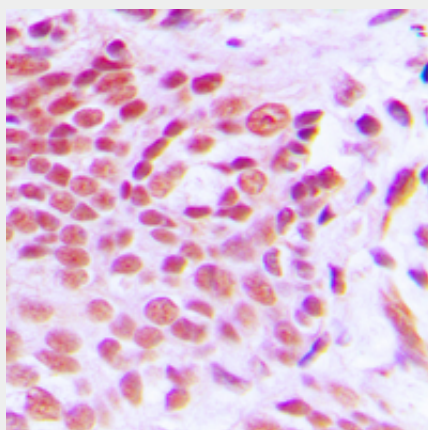
Anti-NAB2 Antibody - Protocols

Provided below are standard protocols that you may find useful for product applications.

- [Western Blot](#)
- [Blocking Peptides](#)
- [Dot Blot](#)
- [Immunohistochemistry](#)
- [Immunofluorescence](#)
- [Immunoprecipitation](#)
- [Flow Cytometry](#)
- [Cell Culture](#)

Anti-NAB2 Antibody - Images

Western blot analysis of NAB2 expression in HEK293T (A), HepG2 (B), mouse lung (C), mouse kidney (D) whole cell lysates.



Immunohistochemical analysis of NAB2 staining in human breast cancer formalin fixed paraffin embedded tissue section. The section was pre-treated using heat mediated antigen retrieval with sodium citrate buffer (pH 6.0). The section was then incubated with the antibody at room temperature and detected using an HRP conjugated compact polymer system. DAB was used as the chromogen. The section was then counterstained with haematoxylin and mounted with DPX.

Anti-NAB2 Antibody - Background

KLH-conjugated synthetic peptide encompassing a sequence within the center region of human NAB2. The exact sequence is proprietary.