

Anti-MKK2 (pT394) Antibody
Rabbit polyclonal antibody to MKK2 (pT394)
Catalog # AP60045**Specification**

Anti-MKK2 (pT394) Antibody - Product Information

Application	WB, IP, IHC
Primary Accession	P36507
Reactivity	Human, Monkey
Host	Rabbit
Clonality	Polyclonal
Calculated MW	44424

Anti-MKK2 (pT394) Antibody - Additional Information**Gene ID** 5605**Other Names**

MEK2; MKK2; PRKMK2; Dual specificity mitogen-activated protein kinase kinase 2; MAP kinase kinase 2; MAPKK 2; ERK activator kinase 2; MAPK/ERK kinase 2; MEK 2

Target/Specificity

Recognizes endogenous levels of MKK2 (pT394) protein.

Dilution

WB~~WB (1/500 - 1/1000), IH (1/100 - 1/200), IP (1/10 - 1/100)

IP~~N/A

IHC~~1:100~500

Format

Liquid in 0.42% Potassium phosphate, 0.87% Sodium chloride, pH 7.3, 30% glycerol, and 0.09% (W/V) sodium azide.

Storage

Store at -20 °C. Stable for 12 months from date of receipt

Anti-MKK2 (pT394) Antibody - Protein Information**Name** MAP2K2**Synonyms** MEK2, MKK2, PRKMK2**Function**

Catalyzes the concomitant phosphorylation of a threonine and a tyrosine residue in a Thr-Glu-Tyr sequence located in MAP kinases. Activates the ERK1 and ERK2 MAP kinases (By similarity). Activates BRAF in a KSR1 or KSR2-dependent manner; by binding to KSR1 or KSR2 releases the inhibitory intramolecular interaction between KSR1 or KSR2 protein kinase and N-terminal domains which promotes KSR1 or KSR2-BRAF dimerization and BRAF activation (PubMed:29433126).

Cellular Location

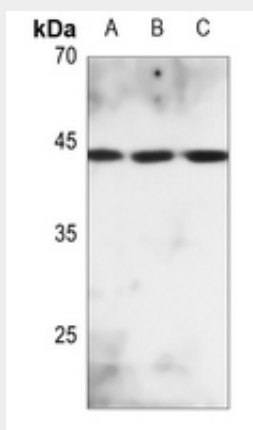
Cytoplasm. Membrane; Peripheral membrane protein. Note=Membrane localization is probably regulated by its interaction with KSR1.

Anti-MKK2 (pT394) Antibody - Protocols

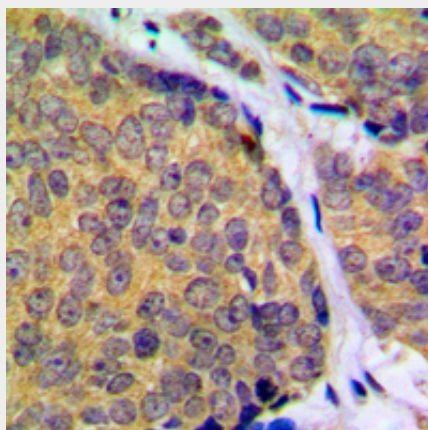
Provided below are standard protocols that you may find useful for product applications.

- [Western Blot](#)
- [Blocking Peptides](#)
- [Dot Blot](#)
- [Immunohistochemistry](#)
- [Immunofluorescence](#)
- [Immunoprecipitation](#)
- [Flow Cytometry](#)
- [Cell Culture](#)

Anti-MKK2 (pT394) Antibody - Images



Western blot analysis of MKK2 (pT394) expression in HEK293T (A), Hela (B), DLD (C) whole cell lysates.



Immunohistochemical analysis of MKK2 (pT394) staining in human breast cancer formalin fixed paraffin embedded tissue section. The section was pre-treated using heat mediated antigen

retrieval with sodium citrate buffer (pH 6.0). The section was then incubated with the antibody at room temperature and detected using an HRP conjugated compact polymer system. DAB was used as the chromogen. The section was then counterstained with haematoxylin and mounted with DPX.

Anti-MKK2 (pT394) Antibody - Background

KLH-conjugated synthetic peptide encompassing a sequence within the C-term region of human MKK2 (pT394). The exact sequence is proprietary.