

Anti-STAT6 (pY641) Antibody
Rabbit polyclonal antibody to STAT6 (pY641)
Catalog # AP60056**Specification**

Anti-STAT6 (pY641) Antibody - Product Information

Application	WB, IP, IHC
Primary Accession	P42226
Other Accession	P52633
Reactivity	Human, Mouse, Rat, Rabbit, Monkey, Pig, Bovine, SARS, Dog
Host	Rabbit
Clonality	Polyclonal
Calculated MW	94135

Anti-STAT6 (pY641) Antibody - Additional Information**Gene ID** 6778**Other Names**

Signal transducer and activator of transcription 6; IL-4 Stat

Target/Specificity

Recognizes endogenous levels of STAT6 (pY641) protein.

Dilution

WB~~WB (1/500 - 1/1000), IH (1/100 - 1/200), IP (1/10 - 1/100)

IP~~N/A

IHC~~1:100~500

Format

Liquid in 0.42% Potassium phosphate, 0.87% Sodium chloride, pH 7.3, 30% glycerol, and 0.09% (W/V) sodium azide.

Storage

Store at -20 °C. Stable for 12 months from date of receipt

Anti-STAT6 (pY641) Antibody - Protein Information**Name** STAT6**Function**

Carries out a dual function: signal transduction and activation of transcription. Involved in IL4/interleukin-4- and IL3/interleukin-3-mediated signaling.

Cellular Location

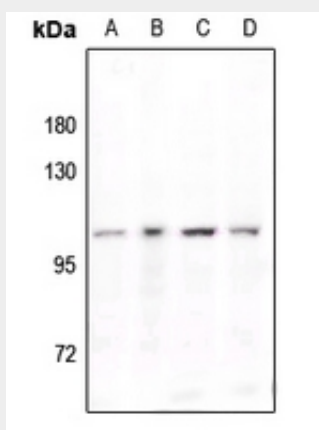
Cytoplasm. Nucleus. Note=Translocated into the nucleus in response to phosphorylation

Anti-STAT6 (pY641) Antibody - Protocols

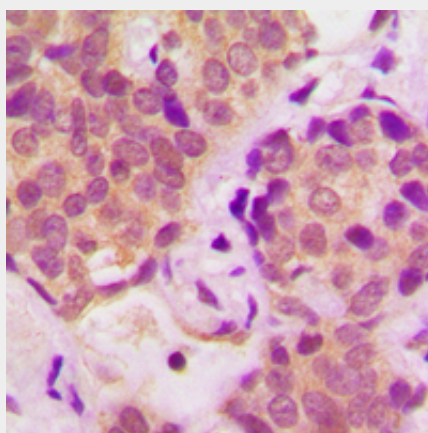
Provided below are standard protocols that you may find useful for product applications.

- [Western Blot](#)
- [Blocking Peptides](#)
- [Dot Blot](#)
- [Immunohistochemistry](#)
- [Immunofluorescence](#)
- [Immunoprecipitation](#)
- [Flow Cytometry](#)
- [Cell Culture](#)

Anti-STAT6 (pY641) Antibody - Images



Western blot analysis of STAT6 (pY641) expression in PC12 (A), SKOV3 (B), A2780 (C), HeLa (D) whole cell lysates.



Immunohistochemical analysis of STAT6 (pY641) staining in human breast cancer formalin fixed paraffin embedded tissue section. The section was pre-treated using heat mediated antigen retrieval with sodium citrate buffer (pH 6.0). The section was then incubated with the antibody at room temperature and detected using an HRP conjugated compact polymer system. DAB was used as the chromogen. The section was then counterstained with haematoxylin and mounted with DPX.

Anti-STAT6 (pY641) Antibody - Background

KLH-conjugated synthetic peptide encompassing a sequence within the center region of human STAT6 (pY641). The exact sequence is proprietary.