

Anti-ELOVL4 Antibody
Rabbit polyclonal antibody to ELOVL4
Catalog # AP60057**Specification**

Anti-ELOVL4 Antibody - Product Information

Application	WB
Primary Accession	O9GZR5
Other Accession	O9EOC4
Reactivity	Human, Mouse, Rat, Monkey
Host	Rabbit
Clonality	Polyclonal
Calculated MW	36829

Anti-ELOVL4 Antibody - Additional Information**Gene ID** 6785**Other Names**

Elongation of very long chain fatty acids protein 4; 3-keto acyl-CoA synthase ELOVL4; ELOVL fatty acid elongase 4; ELOVL FA elongase 4; Very-long-chain 3-oxoacyl-CoA synthase 4

Target/Specificity

KLH-conjugated synthetic peptide encompassing a sequence within the center region of human ELOVL4. The exact sequence is proprietary.

Dilution

WB~~WB (1/500 - 1/1000)

Format

Liquid in 0.42% Potassium phosphate, 0.87% Sodium chloride, pH 7.3, 30% glycerol, and 0.09% (W/V) sodium azide.

Storage

Store at -20 °C. Stable for 12 months from date of receipt

Anti-ELOVL4 Antibody - Protein Information**Name** ELOVL4 {ECO:0000255|HAMAP-Rule:MF_03204}**Function**

Catalyzes the first and rate-limiting reaction of the four reactions that constitute the long-chain fatty acids elongation cycle. This endoplasmic reticulum-bound enzymatic process allows the addition of 2 carbons to the chain of long- and very long-chain fatty acids (VLCFAs) per cycle. Condensing enzyme that catalyzes the synthesis of very long chain saturated (VLC-SFA) and polyunsaturated (PUFA) fatty acids that are involved in multiple biological processes as precursors of membrane lipids and lipid mediators. May play a critical role in early brain and skin development.

Cellular Location

Endoplasmic reticulum membrane {ECO:0000255|HAMAP-Rule:MF_03204, ECO:0000269|PubMed:16036915, ECO:0000269|PubMed:20937905}; Multi-pass membrane protein {ECO:0000255|HAMAP-Rule:MF_03204}

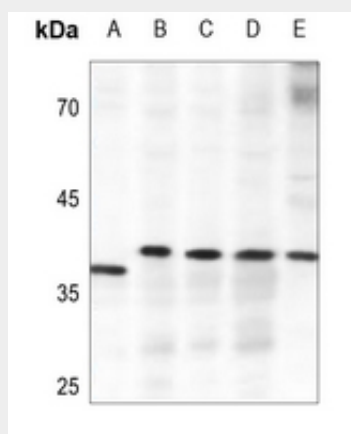
Tissue Location

Expressed in the retina and at much lower level in the brain. Ubiquitous, highest expression in thymus, followed by testis, small intestine, ovary, and prostate. Little or no expression in heart, lung, liver, or leukocytes.

Anti-ELOVL4 Antibody - Protocols

Provided below are standard protocols that you may find useful for product applications.

- [Western Blot](#)
- [Blocking Peptides](#)
- [Dot Blot](#)
- [Immunohistochemistry](#)
- [Immunofluorescence](#)
- [Immunoprecipitation](#)

Anti-ELOVL4 Antibody - Images

Western blot analysis of ELOVL4 expression in SKOV3 (A), HCT116 (B), PC3 (C), CT26 (D), rat testis (E) whole cell lysates.

Anti-ELOVL4 Antibody - Background

KLH-conjugated synthetic peptide encompassing a sequence within the center region of human ELOVL4. The exact sequence is proprietary.