

**Anti-TCEB3 Antibody**  
**Rabbit polyclonal antibody to TCEB3**  
**Catalog # AP60059****Specification**

---

**Anti-TCEB3 Antibody - Product Information**

Application	WB, IHC
Primary Accession	<a href="#">Q14241</a>
Reactivity	Human, Rat, Monkey
Host	Rabbit
Clonality	Polyclonal
Calculated MW	87230

**Anti-TCEB3 Antibody - Additional Information****Gene ID** 6924**Other Names**

Transcription elongation factor B polypeptide 3; Elongin 110 kDa subunit; Elongin-A; EloA; RNA polymerase II transcription factor SIII subunit A1; SIII p110

**Target/Specificity**

Recognizes endogenous levels of TCEB3 protein.

**Dilution**

WB~~WB (1/500 - 1/1000), IH (1/100 - 1/200)

IHC~~1:100~500

**Format**

Liquid in 0.42% Potassium phosphate, 0.87% Sodium chloride, pH 7.3, 30% glycerol, and 0.09% (W/V) sodium azide.

**Storage**

Store at -20 °C. Stable for 12 months from date of receipt

**Anti-TCEB3 Antibody - Protein Information****Name** ELOA ([HGNC:11620](#))**Synonyms** TCEB3**Function**

SIII, also known as elongin, is a general transcription elongation factor that increases the RNA polymerase II transcription elongation past template-encoded arresting sites. Subunit A is transcriptionally active and its transcription activity is strongly enhanced by binding to the dimeric complex of the SIII regulatory subunits B and C (elongin BC complex).

**Cellular Location**

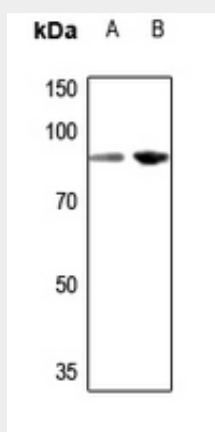
Nucleus. Note=Localizes to sites of DNA damage.

### Anti-TCEB3 Antibody - Protocols

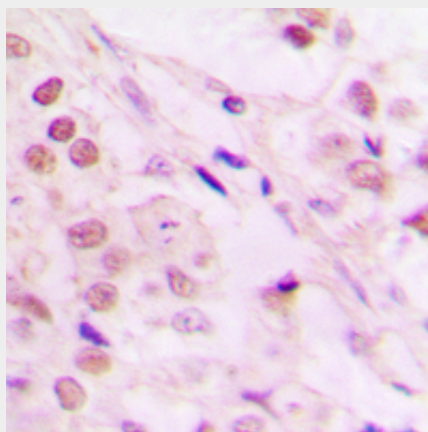
Provided below are standard protocols that you may find useful for product applications.

- [Western Blot](#)
- [Blocking Peptides](#)
- [Dot Blot](#)
- [Immunohistochemistry](#)
- [Immunofluorescence](#)
- [Immunoprecipitation](#)
- [Flow Cytometry](#)
- [Cell Culture](#)

### Anti-TCEB3 Antibody - Images



Western blot analysis of TCEB3 expression in rat lung (A), rat liver (B) whole cell lysates.



Immunohistochemical analysis of TCEB3 staining in human lung cancer formalin fixed paraffin embedded tissue section. The section was pre-treated using heat mediated antigen retrieval with sodium citrate buffer (pH 6.0). The section was then incubated with the antibody at room temperature and detected using an HRP conjugated compact polymer system. DAB was used as the chromogen. The section was then counterstained with haematoxylin and mounted with DPX.

### Anti-TCEB3 Antibody - Background

KLH-conjugated synthetic peptide encompassing a sequence within the center region of human TCEB3. The exact sequence is proprietary.