

Anti-AP2 gamma Antibody
Rabbit polyclonal antibody to AP2 gamma
Catalog # AP60060**Specification**

Anti-AP2 gamma Antibody - Product Information

Application	WB, IHC
Primary Accession	Q92754
Other Accession	Q61312
Reactivity	Human, Mouse, Rat, Monkey
Host	Rabbit
Clonality	Polyclonal
Calculated MW	49177

Anti-AP2 gamma Antibody - Additional Information**Gene ID** 7022**Other Names**Transcription factor AP-2 gamma; AP2-gamma; Activating enhancer-binding protein 2 gamma;
Transcription factor ERF-1**Target/Specificity**

Recognizes endogenous levels of AP2 gamma protein.

DilutionWB~~WB (1/500 - 1/1000), IH (1/100 - 1/200)
IHC~~1:100~500**Format**

Liquid in 0.42% Potassium phosphate, 0.87% Sodium chloride, pH 7.3, 30% glycerol, and 0.09% (W/V) sodium azide.

Storage

Store at -20 °C. Stable for 12 months from date of receipt

Anti-AP2 gamma Antibody - Protein Information**Name** TFAP2C**Function**

Sequence-specific DNA-binding transcription factor that interacts with cellular enhancer elements to regulate transcription of selected genes, and which plays a key role in early embryonic development (PubMed:11694877, PubMed:24413532). AP-2 factors bind to the consensus sequence 5'-GCCNNNGGC-3' and activate genes involved in a large spectrum of important biological functions (PubMed:11694877, PubMed:24413532).

<http://www.uniprot.org/citations/24413532> target="_blank">24413532). TFAP2C plays a key role in early embryonic development by regulating both inner cell mass (ICM) and trophectoderm differentiation (By similarity). At the 8-cell stage, during morula development, controls expression of cell-polarity genes (By similarity). Upon trophoblast commitment, binds to late trophectoderm genes in blastocysts together with CDX2, and later to extra-embryonic ectoderm genes together with SOX2 (By similarity). Binds to both closed and open chromatin with other transcription factors (By similarity). Involved in the MTA1-mediated epigenetic regulation of ESR1 expression in breast cancer (PubMed:24413532).

Cellular Location

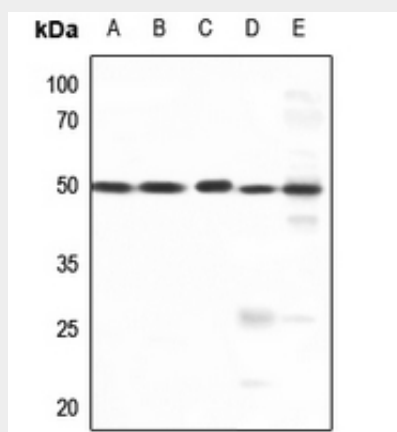
Nucleus.

Anti-AP2 gamma Antibody - Protocols

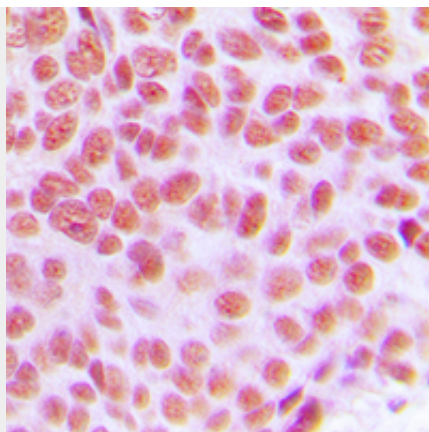
Provided below are standard protocols that you may find useful for product applications.

- [Western Blot](#)
- [Blocking Peptides](#)
- [Dot Blot](#)
- [Immunohistochemistry](#)
- [Immunofluorescence](#)
- [Immunoprecipitation](#)
- [Flow Cytometry](#)
- [Cell Culture](#)

Anti-AP2 gamma Antibody - Images



Western blot analysis of AP2 gamma expression in HEK293T (A), Hela (B), H1688 (C), rat kidney (D), rat lung (E) whole cell lysates.



Immunohistochemical analysis of AP2 gamma staining in human breast cancer formalin fixed paraffin embedded tissue section. The section was pre-treated using heat mediated antigen retrieval with sodium citrate buffer (pH 6.0). The section was then incubated with the antibody at room temperature and detected using an HRP conjugated compact polymer system. DAB was used as the chromogen. The section was then counterstained with haematoxylin and mounted with DPX.

Anti-AP2 gamma Antibody - Background

KLH-conjugated synthetic peptide encompassing a sequence within the C-term region of human AP2 gamma. The exact sequence is proprietary.