

Anti-GALR2 Antibody
Rabbit polyclonal antibody to GALR2
Catalog # AP60072**Specification**

Anti-GALR2 Antibody - Product Information

Application	WB
Primary Accession	O43603
Other Accession	O88854
Reactivity	Human, Mouse, Rat, Bovine
Host	Rabbit
Clonality	Polyclonal
Calculated MW	41700

Anti-GALR2 Antibody - Additional Information**Gene ID** 8811**Other Names**

GALNR2; Galanin receptor type 2; GAL2-R; GALR-2

Target/Specificity

KLH-conjugated synthetic peptide encompassing a sequence within the center region of human GALR2. The exact sequence is proprietary.

Dilution

WB~~WB (1/500 - 1/1000)

Format

Liquid in 0.42% Potassium phosphate, 0.87% Sodium chloride, pH 7.3, 30% glycerol, and 0.09% (W/V) sodium azide.

Storage

Store at -20 °C. Stable for 12 months from date of receipt

Anti-GALR2 Antibody - Protein Information**Name** GALR2**Synonyms** GALNR2**Function**

Receptor for the hormone galanin and GALP. Receptor for the hormone spexin-1 (PubMed:24517231). The activity of this receptor is mediated by G proteins that activate the phospholipase C/protein kinase C pathway (via G(q)) and that inhibit adenylyl cyclase (via G(i)).

Cellular Location

Cell membrane; Multi-pass membrane protein.

Tissue Location

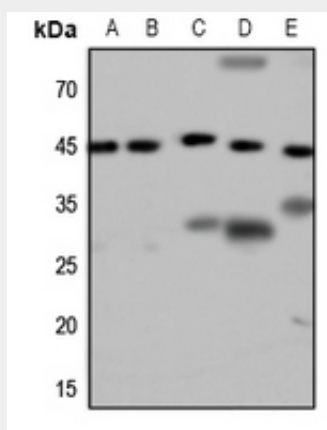
Expressed abundantly within the central nervous system in both hypothalamus and hippocampus. In peripheral tissues, the strongest expression was observed in heart, kidney, liver, and small intestine

Anti-GALR2 Antibody - Protocols

Provided below are standard protocols that you may find useful for product applications.

- [Western Blot](#)
- [Blocking Peptides](#)
- [Dot Blot](#)
- [Immunohistochemistry](#)
- [Immunofluorescence](#)
- [Immunoprecipitation](#)
- [Flow Cytometry](#)
- [Cell Culture](#)

Anti-GALR2 Antibody - Images



Western blot analysis of GALR2 expression in Hela (A), HepG2 (B), mouse brain (C), mouse kidney (D), rat kidney (E) whole cell lysates.

Anti-GALR2 Antibody - Background

KLH-conjugated synthetic peptide encompassing a sequence within the center region of human GALR2. The exact sequence is proprietary.