

**Anti-ARMCX2 Antibody**  
**Rabbit polyclonal antibody to ARMCX2**  
**Catalog # AP60076****Specification**

---

**Anti-ARMCX2 Antibody - Product Information**

Application	WB
Primary Accession	<a href="#">Q7L311</a>
Other Accession	<a href="#">Q6A058</a>
Reactivity	Human, Mouse, Rat, Monkey
Host	Rabbit
Clonality	Polyclonal
Calculated MW	65683

**Anti-ARMCX2 Antibody - Additional Information****Gene ID** 9823**Other Names**

ALEX2; KIAA0512; Armadillo repeat-containing X-linked protein 2; ARM protein lost in epithelial cancers on chromosome X 2; Protein ALEX2

**Target/Specificity**

Recognizes endogenous levels of ARMCX2 protein.

**Dilution**

WB~~WB (1/500 - 1/1000)

**Format**

Liquid in 0.42% Potassium phosphate, 0.87% Sodium chloride, pH 7.3, 30% glycerol, and 0.09% (W/V) sodium azide.

**Storage**

Store at -20 °C. Stable for 12 months from date of receipt

**Anti-ARMCX2 Antibody - Protein Information****Name** ARMCX2**Synonyms** ALEX2, KIAA0512**Function**

May regulate the dynamics and distribution of mitochondria in neural cells.

**Cellular Location**

Mitochondrion {ECO:0000250|UniProtKB:Q6A058}. Mitochondrion outer membrane {ECO:0000250|UniProtKB:Q8BHS6}; Single-pass membrane protein

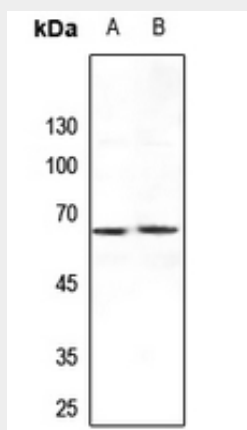
**Tissue Location**

Expressed at high levels ovary, heart, testis, prostate, brain, spleen and colon. Expressed at very low levels in liver and thymus. Not expressed in peripheral blood leukocytes. Not expressed in pancreas and ovarian carcinomas

**Anti-ARMCX2 Antibody - Protocols**

Provided below are standard protocols that you may find useful for product applications.

- [Western Blot](#)
- [Blocking Peptides](#)
- [Dot Blot](#)
- [Immunohistochemistry](#)
- [Immunofluorescence](#)
- [Immunoprecipitation](#)
- [Flow Cytometry](#)
- [Cell Culture](#)

**Anti-ARMCX2 Antibody - Images**

Western blot analysis of ARM CX2 expression in mouse kidney (A), rat kidney (B) whole cell lysates.

**Anti-ARMCX2 Antibody - Background**

KLH-conjugated synthetic peptide encompassing a sequence within the center region of human ARM CX2. The exact sequence is proprietary.