

Anti-ANGPTL7 Antibody
Rabbit polyclonal antibody to ANGPTL7
Catalog # AP60082**Specification**

Anti-ANGPTL7 Antibody - Product Information

| | |
|-------------------|------------------------|
| Application | WB, IP, IHC |
| Primary Accession | O43827 |
| Other Accession | Q8R1Q3 |
| Reactivity | Human, Mouse, Rat |
| Host | Rabbit |
| Clonality | Polyclonal |
| Calculated MW | 40018 |

Anti-ANGPTL7 Antibody - Additional Information**Gene ID** 10218**Other Names**CDT6; Angiopoietin-related protein 7; Angiopoietin-like factor; Angiopoietin-like protein 7;
Cornea-derived transcript 6 protein**Target/Specificity**

KLH-conjugated synthetic peptide encompassing a sequence within the C-term region of human ANGPTL7. The exact sequence is proprietary.

Dilution

WB~~WB (1/500 - 1/1000), IH (1/100 - 1/200), IP (1/10 - 1/100)

IP~~N/A

IHC~~1:100~500

Format

Liquid in 0.42% Potassium phosphate, 0.87% Sodium chloride, pH 7.3, 30% glycerol, and 0.09% (W/V) sodium azide.

Storage

Store at -20 °C. Stable for 12 months from date of receipt

Anti-ANGPTL7 Antibody - Protein Information**Name** ANGPTL7**Synonyms** CDT6**Function**

Has a role in the formation and organization of the extracellular matrix. In the eye, it functions as a mediator of dexamethasone-induced matrix deposition in the trabecular meshwork, the tissue responsible for the outflow of the ocular aqueous humor and for the maintenance of intraocular

pressure (PubMed:21199193). Is a negative regulator of angiogenesis in the cornea, and plays a major role in maintaining corneal avascularity and transparency (PubMed:25622036).

Cellular Location

Secreted.

Tissue Location

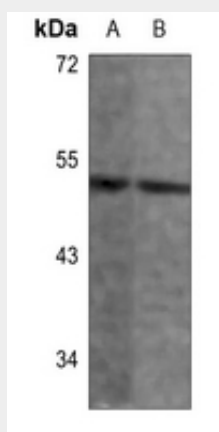
Highly expressed in the cornea (at protein level) (PubMed:11682471). Expression is restricted to the stromal layer (PubMed:11682471). Also detected at the junction between the corneal stromal layer and the conjunctiva. Not detected in the sclera (PubMed:11682471).

Anti-ANGPTL7 Antibody - Protocols

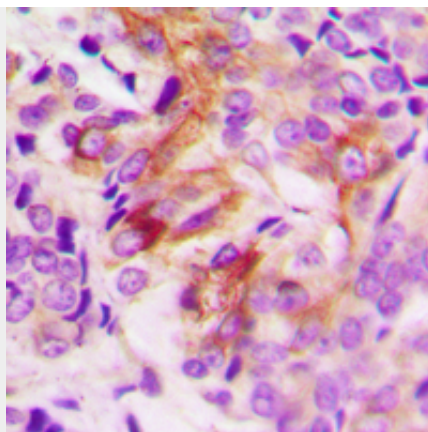
Provided below are standard protocols that you may find useful for product applications.

- [Western Blot](#)
- [Blocking Peptides](#)
- [Dot Blot](#)
- [Immunohistochemistry](#)
- [Immunofluorescence](#)
- [Immunoprecipitation](#)
- [Flow Cytometry](#)
- [Cell Culture](#)

Anti-ANGPTL7 Antibody - Images



Western blot analysis of ANGPTL7 expression in HEK293T (A), rat liver (B) whole cell lysates.



Immunohistochemical analysis of ANGPTL7 staining in human breast cancer formalin fixed paraffin embedded tissue section. The section was pre-treated using heat mediated antigen retrieval with sodium citrate buffer (pH 6.0). The section was then incubated with the antibody at room temperature and detected using an HRP conjugated compact polymer system. DAB was used as the chromogen. The section was then counterstained with haematoxylin and mounted with DPX.

Anti-ANGPTL7 Antibody - Background

KLH-conjugated synthetic peptide encompassing a sequence within the C-term region of human ANGPTL7. The exact sequence is proprietary.