

**Anti-TESK2 Antibody**  
**Rabbit polyclonal antibody to TESK2**  
**Catalog # AP60083****Specification**

---

**Anti-TESK2 Antibody - Product Information**

Application	<b>WB, IP</b>
Primary Accession	<a href="#">O96S53</a>
Other Accession	<a href="#">Q8VCT9</a>
Reactivity	<b>Human, Mouse, Rat, Zebrafish</b>
Host	<b>Rabbit</b>
Clonality	<b>Polyclonal</b>
Calculated MW	<b>63639</b>

**Anti-TESK2 Antibody - Additional Information****Gene ID** 10420**Other Names**

Dual specificity testis-specific protein kinase 2; Testicular protein kinase 2

**Target/Specificity**

KLH-conjugated synthetic peptide encompassing a sequence within the center region of human TESK2. The exact sequence is proprietary.

**Dilution**

WB~~WB (1/500 - 1/1000), IP (1/10 - 1/100)

IP~~N/A

**Format**

Liquid in 0.42% Potassium phosphate, 0.87% Sodium chloride, pH 7.3, 30% glycerol, and 0.09% (W/V) sodium azide.

**Storage**

Store at -20 °C. Stable for 12 months from date of receipt

**Anti-TESK2 Antibody - Protein Information****Name** TESK2**Function**

Dual specificity protein kinase activity catalyzing autophosphorylation and phosphorylation of exogenous substrates on both serine/threonine and tyrosine residues. Phosphorylates cofilin at 'Ser- 3'. May play an important role in spermatogenesis.

**Cellular Location**

Nucleus.

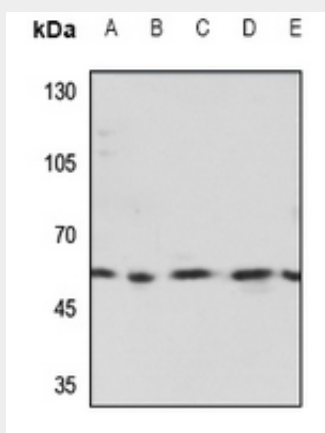
**Tissue Location**

Predominantly expressed in testis and prostate. Found predominantly in non-germinal Sertoli cells

**Anti-TESK2 Antibody - Protocols**

Provided below are standard protocols that you may find useful for product applications.

- [Western Blot](#)
- [Blocking Peptides](#)
- [Dot Blot](#)
- [Immunohistochemistry](#)
- [Immunofluorescence](#)
- [Immunoprecipitation](#)
- [Flow Cytometry](#)
- [Cell Culture](#)

**Anti-TESK2 Antibody - Images**

Western blot analysis of TESK2 expression in HEK293T (A), Hela (B), mouse kidney (C), rat kidney (D), rat spleen (E) whole cell lysates.

**Anti-TESK2 Antibody - Background**

KLH-conjugated synthetic peptide encompassing a sequence within the center region of human TESK2. The exact sequence is proprietary.