

Anti-CD2BP2 Antibody
Rabbit polyclonal antibody to CD2BP2
Catalog # AP60084**Specification**

Anti-CD2BP2 Antibody - Product Information

Application	WB, IHC
Primary Accession	O95400
Reactivity	Human, Monkey
Host	Rabbit
Clonality	Polyclonal
Calculated MW	37646

Anti-CD2BP2 Antibody - Additional Information**Gene ID** 10421**Other Names**

KIAA1178; CD2 antigen cytoplasmic tail-binding protein 2; CD2 cytoplasmic domain-binding protein 2; CD2 tail-binding protein 2; U5 snRNP 52K protein; U5-52K

Target/Specificity

KLH-conjugated synthetic peptide encompassing a sequence within the center region of human CD2BP2. The exact sequence is proprietary.

Dilution

WB~~WB (1/500 - 1/1000), IH (1/100 - 1/200)

IHC~~1:100~500

Format

Liquid in 0.42% Potassium phosphate, 0.87% Sodium chloride, pH 7.3, 30% glycerol, and 0.09% (W/V) sodium azide.

Storage

Store at -20 °C.Stable for 12 months from date of receipt

Anti-CD2BP2 Antibody - Protein Information**Name** CD2BP2**Synonyms** KIAA1178**Function**

Involved in pre-mRNA splicing as component of the U5 snRNP complex that is involved in spliceosome assembly.

Cellular Location

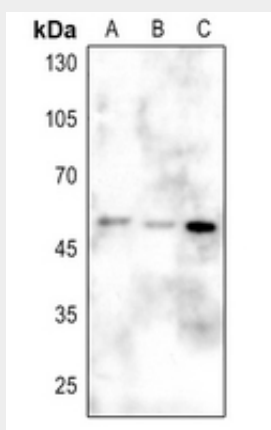
Cytoplasm. Nucleus. Note=Predominantly nuclear.

Anti-CD2BP2 Antibody - Protocols

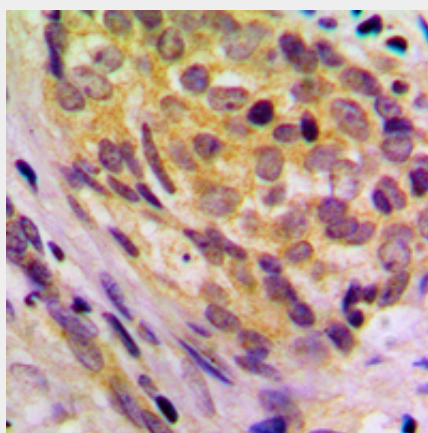
Provided below are standard protocols that you may find useful for product applications.

- [Western Blot](#)
- [Blocking Peptides](#)
- [Dot Blot](#)
- [Immunohistochemistry](#)
- [Immunofluorescence](#)
- [Immunoprecipitation](#)
- [Flow Cytometry](#)
- [Cell Culture](#)

Anti-CD2BP2 Antibody - Images



Western blot analysis of CD2BP2 expression in HEK293T (A), Hela (B), H1688 (C) whole cell lysates.



Immunohistochemical analysis of CD2BP2 staining in human breast cancer formalin fixed paraffin embedded tissue section. The section was pre-treated using heat mediated antigen retrieval with sodium citrate buffer (pH 6.0). The section was then incubated with the antibody at room temperature and detected using an HRP conjugated compact polymer system. DAB was used as the chromogen. The section was then counterstained with haematoxylin and mounted with DPX.

Anti-CD2BP2 Antibody - Background

KLH-conjugated synthetic peptide encompassing a sequence within the center region of human

CD2BP2. The exact sequence is proprietary.