

**Anti-CDC42EP2 Antibody**  
**Rabbit polyclonal antibody to CDC42EP2**  
**Catalog # AP60086****Specification**

---

**Anti-CDC42EP2 Antibody - Product Information**

Application	WB, IHC
Primary Accession	<a href="#">O14613</a>
Other Accession	<a href="#">Q8JZX9</a>
Reactivity	Human, Mouse, Rat, Monkey
Host	Rabbit
Clonality	Polyclonal
Calculated MW	22484

**Anti-CDC42EP2 Antibody - Additional Information****Gene ID** 10435**Other Names**

BORG1; CEP2; Cdc42 effector protein 2; Binder of Rho GTPases 1

**Target/Specificity**

Recognizes endogenous levels of CDC42EP2 protein.

**Dilution**

WB~~WB (1/500 - 1/1000), IH (1/100 - 1/200)

IHC~~1:100~500

**Format**

Liquid in 0.42% Potassium phosphate, 0.87% Sodium chloride, pH 7.3, 30% glycerol, and 0.09% (W/V) sodium azide.

**Storage**

Store at -20 °C. Stable for 12 months from date of receipt

**Anti-CDC42EP2 Antibody - Protein Information****Name** CDC42EP2**Synonyms** BORG1, CEP2**Function**

Probably involved in the organization of the actin cytoskeleton. May act downstream of CDC42 to induce actin filament assembly leading to cell shape changes. Induces pseudopodia formation in fibroblasts in a CDC42-dependent manner.

**Cellular Location**

Endomembrane system; Peripheral membrane protein. Cytoplasm, cytoskeleton

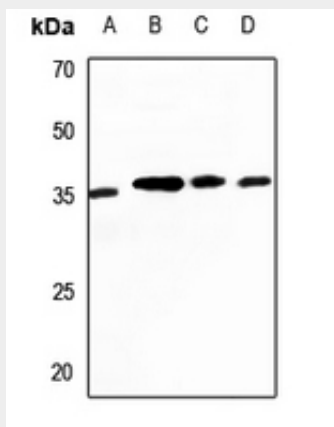
**Tissue Location**

Highly expressed in the heart. Weakly expressed in the pancreas and liver.

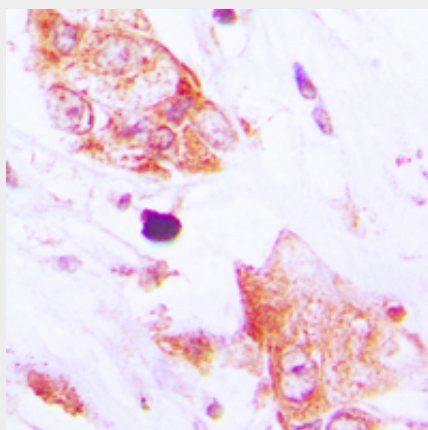
**Anti-CDC42EP2 Antibody - Protocols**

Provided below are standard protocols that you may find useful for product applications.

- [Western Blot](#)
- [Blocking Peptides](#)
- [Dot Blot](#)
- [Immunohistochemistry](#)
- [Immunofluorescence](#)
- [Immunoprecipitation](#)
- [Flow Cytometry](#)
- [Cell Culture](#)

**Anti-CDC42EP2 Antibody - Images**

Western blot analysis of CDC42EP2 expression in Hela (A), mouse heart (B), mouse testis (C), rat testis (D) whole cell lysates.



Immunohistochemical analysis of CDC42EP2 staining in human lung cancer formalin fixed paraffin embedded tissue section. The section was pre-treated using heat mediated antigen retrieval with sodium citrate buffer (pH 6.0). The section was then incubated with the antibody at room temperature and detected using an HRP conjugated compact polymer system. DAB was used as the chromogen. The section was then counterstained with haematoxylin and mounted with DPX.

**Anti-CDC42EP2 Antibody - Background**

KLH-conjugated synthetic peptide encompassing a sequence within the N-term region of human CDC42EP2. The exact sequence is proprietary.