

**Anti-AKAP10 Antibody**  
**Rabbit polyclonal antibody to AKAP10**  
**Catalog # AP60093****Specification**

---

**Anti-AKAP10 Antibody - Product Information**

Application	<b>WB</b>
Primary Accession	<a href="#">O43572</a>
Other Accession	<a href="#">O88845</a>
Reactivity	<b>Human, Mouse, Rat, Rabbit</b>
Host	<b>Rabbit</b>
Clonality	<b>Polyclonal</b>
Calculated MW	<b>73818</b>

**Anti-AKAP10 Antibody - Additional Information****Gene ID** 11216**Other Names**

A-kinase anchor protein 10 mitochondrial; AKAP-10; Dual specificity A kinase-anchoring protein 2; D-AKAP-2; Protein kinase A-anchoring protein 10; PRKA10

**Target/Specificity**

Recognizes endogenous levels of AKAP10 protein.

**Dilution**

WB~~WB (1/500 - 1/1000)

**Format**

Liquid in 0.42% Potassium phosphate, 0.87% Sodium chloride, pH 7.3, 30% glycerol, and 0.09% (W/V) sodium azide.

**Storage**

Store at -20 °C. Stable for 12 months from date of receipt

**Anti-AKAP10 Antibody - Protein Information****Name** AKAP10**Function**

Differentially targeted protein that binds to type I and II regulatory subunits of protein kinase A and anchors them to the mitochondria or the plasma membrane. Although the physiological relevance between PKA and AKAPS with mitochondria is not fully understood, one idea is that BAD, a proapoptotic member, is phosphorylated and inactivated by mitochondria-anchored PKA. It cannot be excluded too that it may facilitate PKA as well as G protein signal transduction, by acting as an adapter for assembling multiprotein complexes. With its RGS domain, it could lead to the interaction to G- alpha proteins, providing a link between the signaling machinery and the downstream kinase (By similarity).

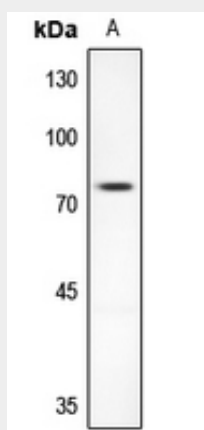
**Cellular Location**

Mitochondrion. Membrane. Cytoplasm. Note=Predominantly mitochondrial but also membrane associated and cytoplasmic

**Anti-AKAP10 Antibody - Protocols**

Provided below are standard protocols that you may find useful for product applications.

- [Western Blot](#)
- [Blocking Peptides](#)
- [Dot Blot](#)
- [Immunohistochemistry](#)
- [Immunofluorescence](#)
- [Immunoprecipitation](#)
- [Flow Cytometry](#)
- [Cell Culture](#)

**Anti-AKAP10 Antibody - Images**

Western blot analysis of AKAP10 expression in rat kidney (A) whole cell lysates.

**Anti-AKAP10 Antibody - Background**

KLH-conjugated synthetic peptide encompassing a sequence within the N-term region of human AKAP10. The exact sequence is proprietary.