

**Anti-ACSL6 Antibody**  
**Rabbit polyclonal antibody to ACSL6**  
**Catalog # AP60096****Specification**

---

**Anti-ACSL6 Antibody - Product Information**

Application	WB, IHC
Primary Accession	<a href="#">O9UKU0</a>
Other Accession	<a href="#">O91WC3</a>
Reactivity	Human, Mouse, Rat
Host	Rabbit
Clonality	Polyclonal
Calculated MW	77752

**Anti-ACSL6 Antibody - Additional Information****Gene ID** 23305**Other Names**

ACS2; FACL6; KIAA0837; LACS5; Long-chain-fatty-acid--CoA ligase 6; Long-chain acyl-CoA synthetase 6; LACS 6

**Target/Specificity**

Recognizes endogenous levels of ACSL6 protein.

**Dilution**

WB~~WB (1/500 - 1/1000), IH (1/100 - 1/200)

IHC~~1:100~500

**Format**

Liquid in 0.42% Potassium phosphate, 0.87% Sodium chloride, pH 7.3, 30% glycerol, and 0.09% (W/V) sodium azide.

**Storage**

Store at -20 °C.Stable for 12 months from date of receipt

**Anti-ACSL6 Antibody - Protein Information****Name** ACSL6 ([HGNC:16496](#))**Function**

Catalyzes the conversion of long-chain fatty acids to their active form acyl-CoA for both synthesis of cellular lipids, and degradation via beta-oxidation (PubMed:<a href="http://www.uniprot.org/citations/22633490" target="\_blank">22633490</a>, PubMed:<a href="http://www.uniprot.org/citations/24269233" target="\_blank">24269233</a>). Plays an important role in fatty acid metabolism in brain and the acyl- CoAs produced may be utilized exclusively for the synthesis of the brain lipid.

**Cellular Location**

Mitochondrion outer membrane; Single-pass type III membrane protein. Peroxisome membrane; Single-pass type III membrane protein. Microsome membrane; Single-pass type III membrane protein. Endoplasmic reticulum membrane; Single-pass type III membrane protein

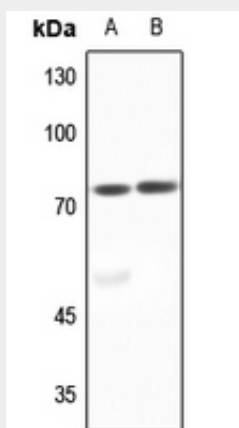
**Tissue Location**

Expressed predominantly in erythrocyte precursors, in particular in reticulocytes, fetal blood cells derived from fetal liver, hemopoietic stem cells from cord blood, bone marrow and brain

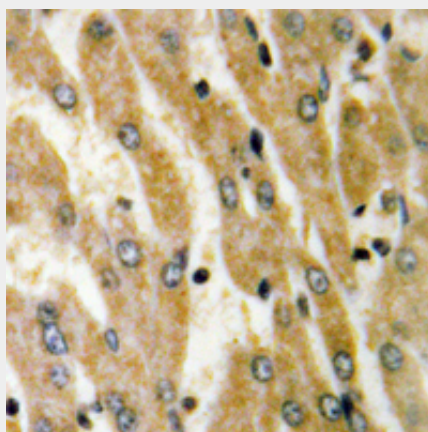
**Anti-ACSL6 Antibody - Protocols**

Provided below are standard protocols that you may find useful for product applications.

- [Western Blot](#)
- [Blocking Peptides](#)
- [Dot Blot](#)
- [Immunohistochemistry](#)
- [Immunofluorescence](#)
- [Immunoprecipitation](#)
- [Flow Cytometry](#)
- [Cell Culture](#)

**Anti-ACSL6 Antibody - Images**

Western blot analysis of ACSL6 expression in rat brain (A), rat testis (B) whole cell lysates.



Immunohistochemical analysis of ACSL6 staining in human liver cancer formalin fixed paraffin embedded tissue section. The section was pre-treated using heat mediated antigen retrieval with sodium citrate buffer (pH 6.0). The section was then incubated with the antibody at room temperature and detected using an HRP conjugated compact polymer system. DAB was used as the chromogen. The section was then counterstained with haematoxylin and mounted with DPX.

**Anti-ACSL6 Antibody - Background**

KLH-conjugated synthetic peptide encompassing a sequence within the center region of human ACSL6. The exact sequence is proprietary.