

Anti-HBP1 Antibody
Rabbit polyclonal antibody to HBP1
Catalog # AP60099**Specification**

Anti-HBP1 Antibody - Product Information

Application	WB, IH
Primary Accession	O60381
Other Accession	Q8R316
Reactivity	Human, Mouse, Rat, Chicken, Bovine, Drosophila
Host	Rabbit
Clonality	Polyclonal
Calculated MW	57645

Anti-HBP1 Antibody - Additional Information**Gene ID** 26959**Other Names**

HMG box-containing protein 1; HMG box transcription factor 1; High mobility group box transcription factor 1

Target/Specificity

Recognizes endogenous levels of HBP1 protein.

Dilution

WB~~WB (1/500 - 1/1000), IH (1/100 - 1/200)

IH~~WB (1/500 - 1/1000), IH (1/100 - 1/200)

Format

Liquid in 0.42% Potassium phosphate, 0.87% Sodium chloride, pH 7.3, 30% glycerol, and 0.09% (W/V) sodium azide.

Storage

Store at -20 °C. Stable for 12 months from date of receipt

Anti-HBP1 Antibody - Protein Information**Name** HBP1**Function**

Transcriptional repressor that binds to the promoter region of target genes. Plays a role in the regulation of the cell cycle and of the Wnt pathway. Binds preferentially to the sequence 5'-TTCATTCATTCA-3'. Binding to the histone H1.0 promoter is enhanced by interaction with RB1. Disrupts the interaction between DNA and TCF4.

Cellular Location

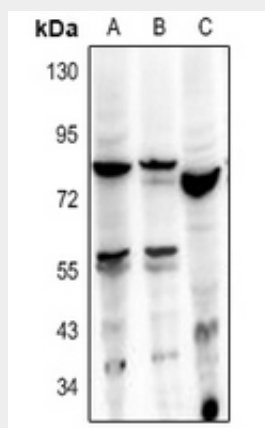
Nucleus {ECO:0000255|PROSITE-ProRule:PRU00267, ECO:0000269|PubMed:10562551}

Anti-HBP1 Antibody - Protocols

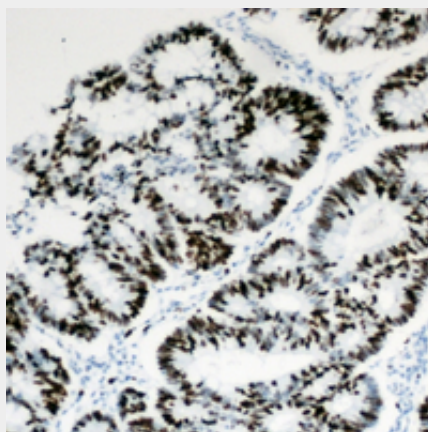
Provided below are standard protocols that you may find useful for product applications.

- [Western Blot](#)
- [Blocking Peptides](#)
- [Dot Blot](#)
- [Immunohistochemistry](#)
- [Immunofluorescence](#)
- [Immunoprecipitation](#)
- [Flow Cytometry](#)
- [Cell Culture](#)

Anti-HBP1 Antibody - Images



Western blot analysis of HBP1 expression in A375 (A), MCF7 (B), PC12 (C) whole cell lysates.



Immunohistochemical analysis of HBP1 staining in human colon cancer formalin fixed paraffin embedded tissue section. The section was pre-treated using heat mediated antigen retrieval with sodium citrate buffer (pH 6.0). The section was then incubated with the antibody at room temperature and detected using an HRP conjugated compact polymer system. DAB was used as the chromogen. The section was then counterstained with haematoxylin and mounted with DPX.

Anti-HBP1 Antibody - Background

KLH-conjugated synthetic peptide encompassing a sequence within the C-term region of human HBP1. The exact sequence is proprietary.