

Anti-ANKRD1 Antibody
Rabbit polyclonal antibody to ANKRD1
Catalog # AP60100**Specification**

Anti-ANKRD1 Antibody - Product Information

Application	WB, IHC
Primary Accession	Q15327
Other Accession	Q9CR42
Reactivity	Human, Mouse, Rat, Rabbit, Pig, Chicken, Bovine
Host	Rabbit
Clonality	Polyclonal
Calculated MW	36252

Anti-ANKRD1 Antibody - Additional Information**Gene ID** 27063**Other Names**

C193; CARP; HA1A2; Ankyrin repeat domain-containing protein 1; Cardiac ankyrin repeat protein; Cytokine-inducible gene C-193 protein; Cytokine-inducible nuclear protein

Target/Specificity

Recognizes endogenous levels of ANKRD1 protein.

Dilution

WB~~WB (1/500 - 1/1000), IH (1/100 - 1/200)

IHC~~1:100~500

Format

Liquid in 0.42% Potassium phosphate, 0.87% Sodium chloride, pH 7.3, 30% glycerol, and 0.09% (W/V) sodium azide.

Storage

Store at -20 °C. Stable for 12 months from date of receipt

Anti-ANKRD1 Antibody - Protein Information**Name** ANKRD1**Synonyms** C193, CARP, HA1A2**Function**

May play an important role in endothelial cell activation. May act as a nuclear transcription factor that negatively regulates the expression of cardiac genes. Induction seems to be correlated with apoptotic cell death in hepatoma cells.

Cellular Location

Nucleus

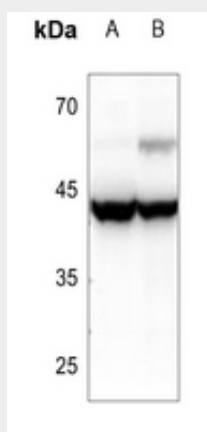
Tissue Location

Mainly expressed in activated vascular endothelial cells. To a lower extent, also expressed in hepatoma cells

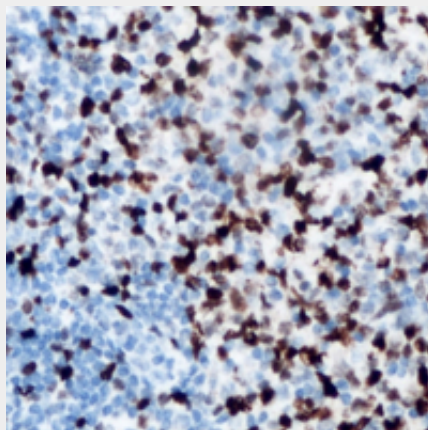
Anti-ANKRD1 Antibody - Protocols

Provided below are standard protocols that you may find useful for product applications.

- [Western Blot](#)
- [Blocking Peptides](#)
- [Dot Blot](#)
- [Immunohistochemistry](#)
- [Immunofluorescence](#)
- [Immunoprecipitation](#)
- [Flow Cytometry](#)
- [Cell Culture](#)

Anti-ANKRD1 Antibody - Images

Western blot analysis of ANKRD1 expression in mouse muscle (A), rat muscle (B) whole cell lysates.



Immunohistochemical analysis of ANKRD1 staining in human lymph node formalin fixed paraffin

embedded tissue section. The section was pre-treated using heat mediated antigen retrieval with sodium citrate buffer (pH 6.0). The section was then incubated with the antibody at room temperature and detected using an HRP conjugated compact polymer system. DAB was used as the chromogen. The section was then counterstained with haematoxylin and mounted with DPX.

Anti-ANKRD1 Antibody - Background

KLH-conjugated synthetic peptide encompassing a sequence within the C-term region of human ANKRD1. The exact sequence is proprietary.