

**Anti-TRA2A Antibody**  
**Rabbit polyclonal antibody to TRA2A**  
**Catalog # AP60101****Specification**

---

**Anti-TRA2A Antibody - Product Information**

Application	WB, IF/IC
Primary Accession	<a href="#">Q13595</a>
Other Accession	<a href="#">Q6PFR5</a>
Reactivity	Human, Mouse, Rat, Monkey, Pig, Bovine
Host	Rabbit
Clonality	Polyclonal
Calculated MW	32689

**Anti-TRA2A Antibody - Additional Information****Gene ID** 29896**Other Names**

Transformer-2 protein homolog alpha; TRA-2 alpha; TRA2-alpha; Transformer-2 protein homolog A

**Target/Specificity**

KLH-conjugated synthetic peptide encompassing a sequence within the C-term region of human TRA2A. The exact sequence is proprietary.

**Dilution**

WB~~WB (1/500 - 1/1000), IF/IC (1/100 - 1/500)

IF/IC~~N/A

**Format**

Liquid in 0.42% Potassium phosphate, 0.87% Sodium chloride, pH 7.3, 30% glycerol, and 0.09% (W/V) sodium azide.

**Storage**

Store at -20 °C. Stable for 12 months from date of receipt

**Anti-TRA2A Antibody - Protein Information****Name** TRA2A ([HGNC:16645](#))**Function**

Sequence-specific RNA-binding protein which participates in the control of pre-mRNA splicing.

**Cellular Location**

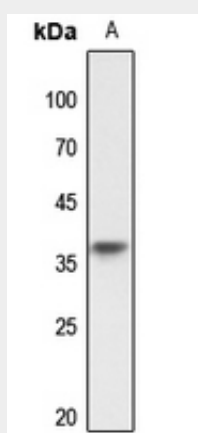
Nucleus.

## Anti-TRA2A Antibody - Protocols

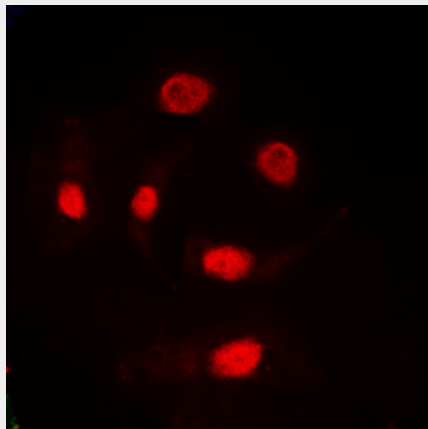
Provided below are standard protocols that you may find useful for product applications.

- [Western Blot](#)
- [Blocking Peptides](#)
- [Dot Blot](#)
- [Immunohistochemistry](#)
- [Immunofluorescence](#)
- [Immunoprecipitation](#)
- [Flow Cytometry](#)
- [Cell Culture](#)

## Anti-TRA2A Antibody - Images



Western blot analysis of TRA2A expression in HeLa (A) whole cell lysates.



Immunofluorescent analysis of TRA2A staining in HeLa cells. Formalin-fixed cells were permeabilized with 0.1% Triton X-100 in TBS for 5-10 minutes and blocked with 3% BSA-PBS for 30 minutes at room temperature. Cells were probed with the primary antibody in 3% BSA-PBS and incubated overnight at 4 °C in a humidified chamber. Cells were washed with PBST and incubated with a DyLight 594-conjugated secondary antibody (red) in PBS at room temperature in the dark.

## Anti-TRA2A Antibody - Background

KLH-conjugated synthetic peptide encompassing a sequence within the C-term region of human TRA2A. The exact sequence is proprietary.