

Anti-TBX22 Antibody
Rabbit polyclonal antibody to TBX22
Catalog # AP60103**Specification**

Anti-TBX22 Antibody - Product Information

Application	WB, IH
Primary Accession	O9Y458
Other Accession	O8K402
Reactivity	Human, Mouse, Rat
Host	Rabbit
Clonality	Polyclonal
Calculated MW	57910

Anti-TBX22 Antibody - Additional Information**Gene ID** 50945**Other Names**

TBOX22; T-box transcription factor TBX22; T-box protein 22

Target/Specificity

Recognizes endogenous levels of TBX22 protein.

Dilution

WB~~WB (1/500 - 1/1000), IH (1/100 - 1/200)

IH~~WB (1/500 - 1/1000), IH (1/100 - 1/200)

Format

Liquid in 0.42% Potassium phosphate, 0.87% Sodium chloride, pH 7.3, 30% glycerol, and 0.09% (W/V) sodium azide.

Storage

Store at -20 °C. Stable for 12 months from date of receipt

Anti-TBX22 Antibody - Protein Information**Name** TBX22**Synonyms** TBOX22**Function**

Probable transcriptional regulator involved in developmental processes. This is major determinant crucial to palatogenesis.

Cellular Location

Nucleus {ECO:0000255|PROSITE-ProRule:PRU00201}.

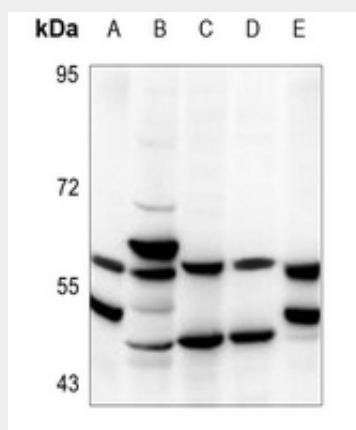
Tissue Location

Seems to be expressed at a low level.

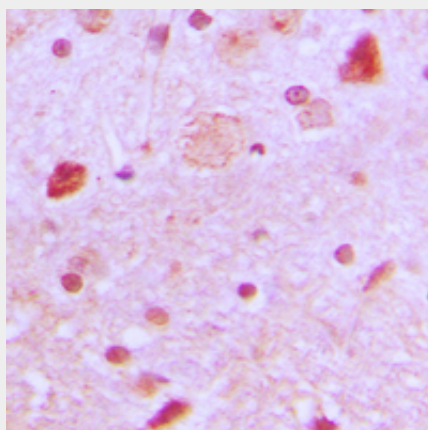
Anti-TBX22 Antibody - Protocols

Provided below are standard protocols that you may find useful for product applications.

- [Western Blot](#)
- [Blocking Peptides](#)
- [Dot Blot](#)
- [Immunohistochemistry](#)
- [Immunofluorescence](#)
- [Immunoprecipitation](#)
- [Flow Cytometry](#)
- [Cell Culture](#)

Anti-TBX22 Antibody - Images

Western blot analysis of TBX22 expression in mouse brain (A), C6 (B), HEK293T (C), HepG2 (D), mouse testis (E) whole cell lysates.



Immunohistochemical analysis of TBX22 staining in human brain formalin fixed paraffin embedded tissue section. The section was pre-treated using heat mediated antigen retrieval with sodium citrate buffer (pH 6.0). The section was then incubated with the antibody at room temperature and detected using an HRP conjugated compact polymer system. DAB was used as the chromogen. The section was then counterstained with haematoxylin and mounted with DPX.

Anti-TBX22 Antibody - Background

KLH-conjugated synthetic peptide encompassing a sequence within the N-term region of human TBX22. The exact sequence is proprietary.