

**Anti-CDKL3 Antibody**  
**Rabbit polyclonal antibody to CDKL3**  
**Catalog # AP60104****Specification**

---

**Anti-CDKL3 Antibody - Product Information**

Application	WB, IHC
Primary Accession	<a href="#">Q8IVW4</a>
Other Accession	<a href="#">Q8BLF2</a>
Reactivity	Human, Mouse, Rat, Monkey
Host	Rabbit
Clonality	Polyclonal
Calculated MW	67514

**Anti-CDKL3 Antibody - Additional Information****Gene ID** 51265**Other Names**

NKIAMRE; Cyclin-dependent kinase-like 3; Serine/threonine-protein kinase NKIAMRE

**Target/Specificity**

Recognizes endogenous levels of CDKL3 protein.

**Dilution**

WB~~WB (1/500 - 1/1000), IH (1/100 - 1/200)

IHC~~1:100~500

**Format**

Liquid in 0.42% Potassium phosphate, 0.87% Sodium chloride, pH 7.3, 30% glycerol, and 0.09% (W/V) sodium azide.

**Storage**

Store at -20 °C. Stable for 12 months from date of receipt

**Anti-CDKL3 Antibody - Protein Information****Name** CDKL3 ([HGNC:15483](#))**Cellular Location**

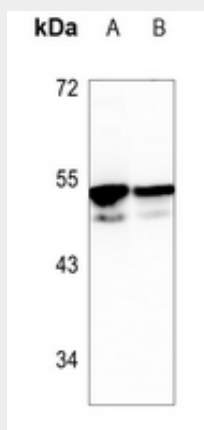
Cytoplasm.

**Anti-CDKL3 Antibody - Protocols**

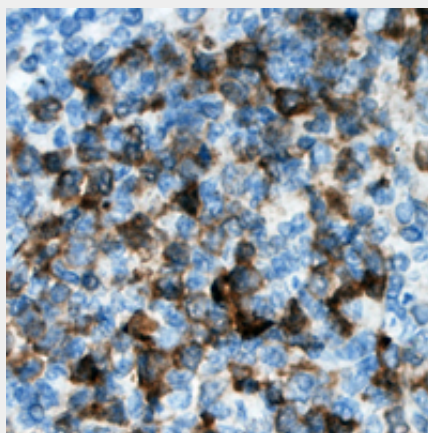
Provided below are standard protocols that you may find useful for product applications.

- [Western Blot](#)
- [Blocking Peptides](#)
- [Dot Blot](#)
- [Immunohistochemistry](#)
- [Immunofluorescence](#)
- [Immunoprecipitation](#)
- [Flow Cytometry](#)
- [Cell Culture](#)

#### Anti-CDKL3 Antibody - Images



Western blot analysis of CDKL3 expression in mouse heart (A), rat heart (B) whole cell lysates.



Immunohistochemical analysis of CDKL3 staining in human lymph node formalin fixed paraffin embedded tissue section. The section was pre-treated using heat mediated antigen retrieval with sodium citrate buffer (pH 6.0). The section was then incubated with the antibody at room temperature and detected using an HRP conjugated compact polymer system. DAB was used as the chromogen. The section was then counterstained with haematoxylin and mounted with DPX.

#### Anti-CDKL3 Antibody - Background

KLH-conjugated synthetic peptide encompassing a sequence within the center region of human CDKL3. The exact sequence is proprietary.