

**Anti-CK1 gamma 1 Antibody**  
**Rabbit polyclonal antibody to CK1 gamma 1**  
**Catalog # AP60105****Specification**

---

**Anti-CK1 gamma 1 Antibody - Product Information**

Application	WB, IF/IC, IHC
Primary Accession	<a href="#">Q9HCP0</a>
Other Accession	<a href="#">Q8BTH8</a>
Reactivity	Human, Mouse, Rat, Monkey, Bovine
Host	Rabbit
Clonality	Polyclonal
Calculated MW	48511

**Anti-CK1 gamma 1 Antibody - Additional Information****Gene ID** 53944**Other Names**

Casein kinase I isoform gamma-1; CKI-gamma 1

**Target/Specificity**

KLH-conjugated synthetic peptide encompassing a sequence within the N-term region of human CK1 gamma 1. The exact sequence is proprietary.

**Dilution**

WB~~WB (1/500 - 1/1000), IH (1/100 - 1/200), IF/IC (1/100 - 1/500)

IF/IC~~N/A

IHC~~1:100~500

**Format**

Liquid in 0.42% Potassium phosphate, 0.87% Sodium chloride, pH 7.3, 30% glycerol, and 0.09% (W/V) sodium azide.

**Storage**

Store at -20 °C. Stable for 12 months from date of receipt

**Anti-CK1 gamma 1 Antibody - Protein Information****Name** CSNK1G1**Function**

Serine/threonine-protein kinase. Casein kinases are operationally defined by their preferential utilization of acidic proteins such as caseins as substrates. It can phosphorylate a large number of proteins. Participates in Wnt signaling. Regulates fast synaptic transmission mediated by glutamate (By similarity). Phosphorylates CLSPN.

**Cellular Location**

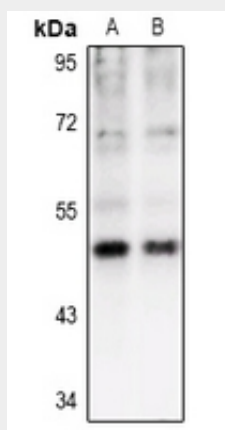
Cytoplasm.

### Anti-CK1 gamma 1 Antibody - Protocols

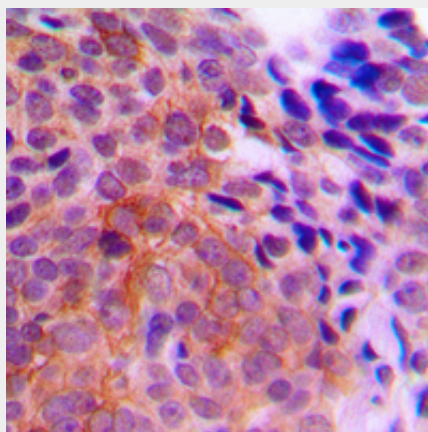
Provided below are standard protocols that you may find useful for product applications.

- [Western Blot](#)
- [Blocking Peptides](#)
- [Dot Blot](#)
- [Immunohistochemistry](#)
- [Immunofluorescence](#)
- [Immunoprecipitation](#)
- [Flow Cytometry](#)
- [Cell Culture](#)

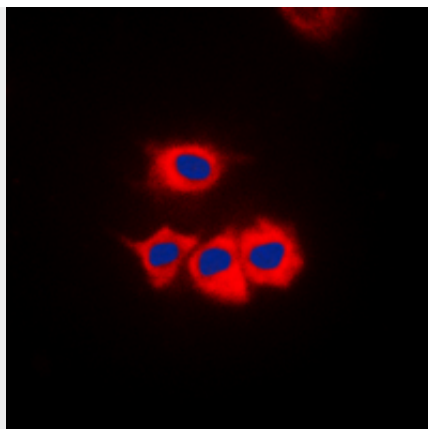
### Anti-CK1 gamma 1 Antibody - Images



Western blot analysis of CK1 gamma 1 expression in HEK293T (A), A549 (B) whole cell lysates.



Immunohistochemical analysis of CK1 gamma 1 staining in human breast cancer formalin fixed paraffin embedded tissue section. The section was pre-treated using heat mediated antigen retrieval with sodium citrate buffer (pH 6.0). The section was then incubated with the antibody at room temperature and detected using an HRP conjugated compact polymer system. DAB was used as the chromogen. The section was then counterstained with haematoxylin and mounted with DPX.



Immunofluorescent analysis of CK1 gamma 1 staining in Jurkat cells. Formalin-fixed cells were permeabilized with 0.1% Triton X-100 in TBS for 5-10 minutes and blocked with 3% BSA-PBS for 30 minutes at room temperature. Cells were probed with the primary antibody in 3% BSA-PBS and incubated overnight at 4 °C in a humidified chamber. Cells were washed with PBST and incubated with a DyLight 594-conjugated secondary antibody (red) in PBS at room temperature in the dark. DAPI was used to stain the cell nuclei (blue).

#### **Anti-CK1 gamma 1 Antibody - Background**

KLH-conjugated synthetic peptide encompassing a sequence within the N-term region of human CK1 gamma 1. The exact sequence is proprietary.